

Granite State Electric Company
d/b/a National Grid
Storm Fund Report for Calendar Year 2011

May 1, 2012

**Granite State Electric Company
d/b/a National Grid
Annual Storm Fund Report
Calendar Year 2011**

1. Introduction

Granite State Electric Company d/b/a National Grid (“National Grid” or “Company”) is submitting the following Annual Storm Fund Recovery Report for 2011, in compliance with the requirements set forth in Exhibit GSE-7 of the Company’s Rate Plan Settlement in Docket No. DG 06-107. This report addresses the requirements found in § 5 of Exhibit GSE-7, namely: (1) provide a description of the storm; (2) provide a summary of the extent of the damage to the distribution system, including the number of outages and length of outages; (3) detail the collections credited to the storm fund; and (4) provide the details of any qualifying storm costs that were charged to the fund during the preceding calendar year.

2. Annual Report of Storm Fund Activity

Attachment 1 reflects a preliminary report of the annual storm fund activity, pending final accounting of storm costs incurred during the calendar year period. This report shows the opening balance of the storm fund, monthly collections, including those in base rates and the Storm Recovery Adjustment Factor, monthly interest applied, preliminary qualifying storm costs charged to the storm fund, and the closing balance of the storm fund.

Attachment 2 represents the monthly detail of the preliminary storm-related charges applied to the storm fund during calendar year 2011 by individual storm event. Detailed descriptions and costs related to these qualifying storm fund storm events are provided in Attachments 3 through 6, as listed below.

Attachment 3: Wind Storm – February 2010

Attachment 4: Ice Storm – March 2011

Attachment 5: Tropical Storm Irene – August 2011

Attachment 6: Snow Storm – October 2011

Granite State Electric Company
d/b/a National Grid
Annual Report of Storm Fund Activity
For the Year Ended December 31, 2011

Line	Month	Beginning Balance (a)	Base Rate Contribution (b)	SRA Factor Contribution (c)	Monthly Interest (d)	Storm Charges 2/ (e)	Ending Balance (f)
1	January-11	\$ (3,164,504) 1/	\$ 10,000	\$ 32,412	\$ (8,524)	\$ (7,763)	\$ (3,138,378)
2	February	(3,138,378)	10,000	31,341	(8,444)	-	(3,105,481)
3	March	(3,105,481)	10,000	29,619	(9,827)	(1,085,623)	(4,161,312)
4	April	(4,161,312)	10,000	28,401	(12,359)	(842,073)	(4,977,344)
5	May	(4,977,344)	10,000	26,715	(13,269)	119,205	(4,834,693)
6	June	(4,834,693)	10,000	30,029	(13,040)	(109)	(4,807,812)
7	July	(4,807,812)	10,000	33,099	(12,967)	(2,753)	(4,780,433)
8	August	(4,780,433)	10,000	36,116	(12,890)	(4,278)	(4,751,484)
9	September	(4,751,484)	10,000	31,573	(13,369)	(411,315)	(5,134,595)
10	October	(5,134,595)	10,000	28,921	(14,664)	(598,290)	(5,708,628)
11	November	(5,708,628)	10,000	27,699	(16,337)	(684,661)	(6,371,927)
12	December	(6,371,927)	10,000	28,843	(17,709)	(372,172)	(6,722,965)
13	Year Ended 12/31/11	\$ (3,164,504)	\$ 120,000	\$ 364,768	\$ (153,399)	\$ (3,889,831)	\$ (6,722,965)

1/ Ending Balance per Docket No. DE 11-221, adjusted for exclusion of costs associated with February, 2010 Wind Storm per the Revised Final Audit Report dated April 5, 2012 and the calculated interest due to adjustment.

2/ See Attachment 2

Granite State Electric Company
d/b/a National Grid
Annual Report of Storm Fund Activity
For the Year Ended December 31, 2011

Line	Month	February-10 Storm Event (a)	March-11 Storm Event (b)	August-11 Storm Event (c)	October-11 Storm Event (d)	Total (e)
1	January-11	\$ (7,763)				\$ (7,763)
2	February					-
3	March		(1,085,623)			(1,085,623)
4	April		(842,073)			(842,073)
5	May		119,205			119,205
6	June		(109)			(109)
7	July		(2,753)			(2,753)
8	August		(21)	(4,257)		(4,278)
9	September		(1,584)	(409,731)		(411,315)
10	October			(533,090)	(65,200)	(598,290)
11	November			(110,734)	(573,927)	(684,661)
12	December			(37,166)	(335,006)	(372,172)
13	Year Ended 12/31/11	\$ (7,763)	\$ (1,812,957)	\$ (1,094,978)	\$ (974,133)	\$ (3,889,831)

**Granite State Electric Company
d/b/a National Grid
Annual Storm Fund Report
February 24, 2010 Wind Storm**

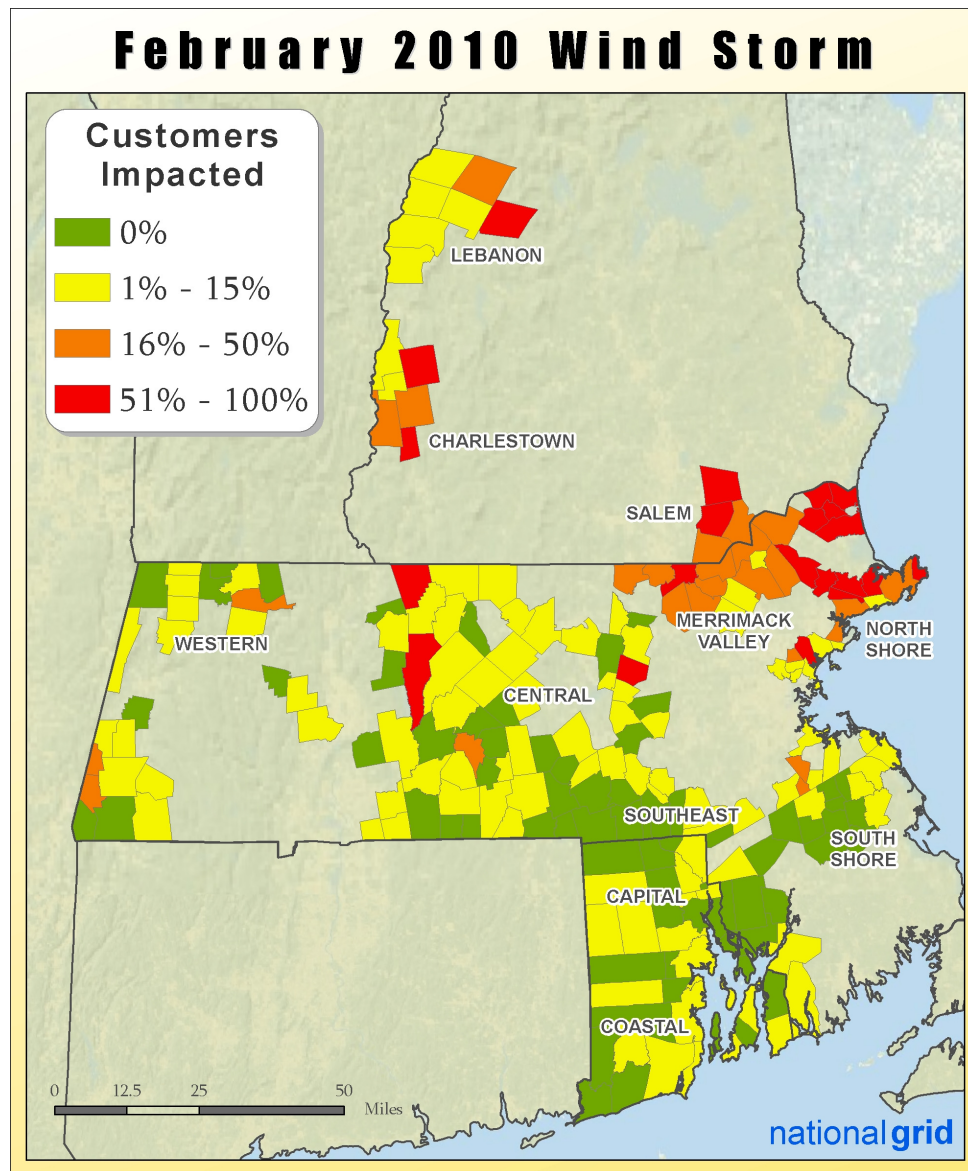
The Company is providing the following description of the February 24, 2010 wind storm as Attachment 3 to its Annual Storm Fund Report for calendar year 2011 activity. Per the operational reporting requirements found in § 5 of Exhibit GSE-7 of the Company's Rate Plan Settlement in Docket No. DG 06-107, this Attachment will: (1) provide a description of the storm and (2) provide a summary of the extent of the damage to the distribution system, including the number of outages and length of outages.

1. Description of the Storm

The February wind storm was a large storm that impacted multiple states. In New Hampshire, it affected approximately 11,319 customers, causing interruptions in 17 of the 21 New Hampshire communities served by the Company. Despite the damage and large number of customer interruptions, National Grid led a successful storm restoration effort, which succeeded in restoring its New Hampshire customers by March 1, 2010.

Overnight (Thursday, Feb. 25th into Friday, Feb. 26th) hurricane force winds interrupted service to over 100,000 customers in Massachusetts and New Hampshire. The winds combined with torrential rains and snow toppled hundreds of trees, bringing down utility poles and power lines. In New Hampshire the outages were concentrated in the communities of Salem, Pelham and Lebanon, however, the storm impacted customers in 17 of the 21 New Hampshire communities serviced by National Grid.

Figure 1
February 24, 2010 Wind Storm
Customers Impacted



2. Summary of the Extent of the Storm Damage

Due to the severe winds and downed trees portions of National Grid's New Hampshire customers were without power from Friday, February 26, 2010 until Monday, March 1, 2010.

In all, National Grid experienced 219 events, with 11,319 customers interrupted in the New Hampshire service territory during the February 25 - 28, 2010 storm. Exhibit 1, attached to this document, is a table that details the observed damage to the Company's distribution system by circuit number.

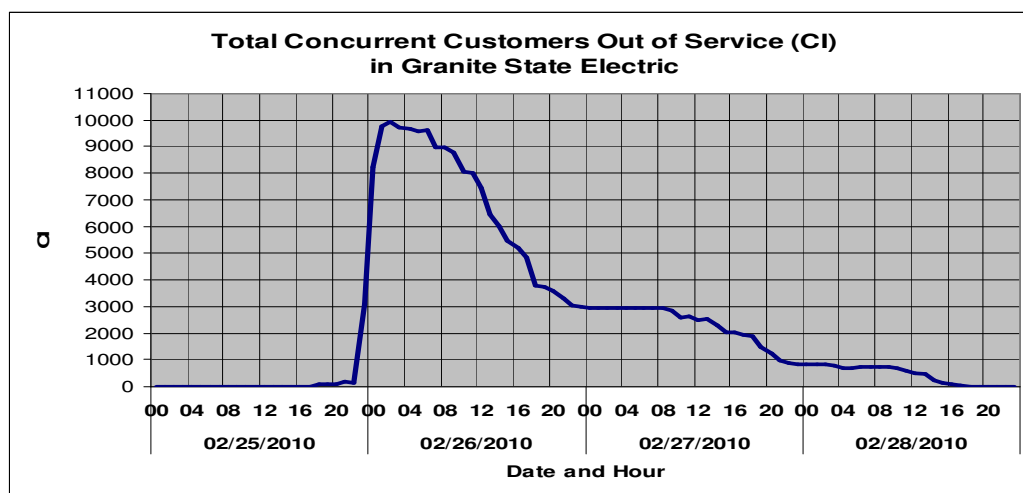
In response to these outages National Grid provided 17 Contractor Tree Service personnel, 45 Contractor Line Crews, 29 Affiliate Company Line Crews, and 5 Company Line Crews in the field to restore power.

Additionally, National Grid provided 3 Company Damage Assessment personnel, 20 Company personnel as Wires Down Appraisers and 10 other personnel for support of all restoration efforts.

Ninety one percent (91%) of the New Hampshire customers affected were restored by the morning of Monday, March 1st with the remaining 806 restored by end of that day.

The following chart shows the number of customers without power by date and hour.

Figure 2
February 24, 2010 Wind Storm
Customers Without Power



Analysis and Reporting reviewed the interruption data stored in the Interruption and Disturbance System (IDS) after the storm. It was determined that both February 25th and 26th qualified as major storm days based on the criteria established by the New Hampshire Public Utilities Commission.

Date	Events	Customers Interrupted	Customer Minutes Interrupted	Major Storm Qualification
02/25/2010	54	8,444	12,000,398	>45 Events & > 15%
02/26/2010	129	2,592	2,147,613	>45 Events
02/27/2010	24	224	60,246	----
02/28/2010	12	59	13,842	----

3. **Details of Qualifying Costs Charged to the Storm Fund in 2011**

Exhibit 2 details the costs associated with the February 24, 2010 wind storm charged to the storm fund during calendar year 2011.

Event ID	Feeder(s)	Time Off	Weather	Cause	Classification	CI	Duration
7474049	42-13L2	02/25/2010 22:58	Rain - heavy	Deterioration	Fused branch - overhead	38	2236.82
7475642	42-13L2	02/25/2010 23:57	Snow - wet	Tree Fell	Fused branch - overhead	4	3803.65
7475472	42-13L2	02/25/2010 23:01	Rain - heavy	Tree Fell	Secondary/Service - overhead	1	3779.33
7474497	42-13L2	02/25/2010 23:17	Rain - heavy	Tree Fell	Fused branch - overhead	78	2623.65
7474107	42-13L2	02/25/2010 23:25	Rain - heavy	Tree Fell	Main line - overhead	560	3955.05
7475149	42-14L2	02/25/2010 22:58	Snow - wet	Tree Fell	Fused branch - overhead	96	2671
7472749	41-7L1	02/25/2010 23:37	Rain - heavy	Tree - Broken Limb	Fused branch - overhead	120	911.77
7475518	42-14L1	02/25/2010 23:03	Snow - wet	Tree Fell	Fused branch - overhead	213	3760.3
7475613	42-13L2	02/25/2010 23:46	Rain - heavy	Tree Fell	Secondary/Service - overhead	1	3940.22
7473407	42-13L2	02/25/2010 20:25	Rain - heavy	Tree - Broken Limb	Secondary/Service - overhead	15	1543.2
7473175	42-14L3	02/25/2010 23:43	Rain - heavy	Tree Fell	Fused branch - overhead	7	3636.38
7475317	42-14L2	02/25/2010 23:53	Rain - heavy	Tree Fell	Fused branch - overhead	7	3521.37
7473322	42-14L1	02/25/2010 21:52	Rain - heavy	Tree - Broken Limb	Main line - overhead	331	3880
7474767	42-9L3	02/25/2010 23:10	Rain - light / moderate	Tree Fell	Transformer - overhead	8	2810.12
7471372	41-1L2	02/25/2010 7:51	Rain - light / moderate	Tree Fell	Fused branch - overhead	4	234.23
7474379	42-13L1	02/25/2010 23:16	Rain - heavy	Tree Fell	Fused branch - overhead	256	2334
7472858	42-10L4	02/25/2010 22:37	Rain - heavy	Tree - Broken Limb	Fused branch - overhead	16	1061.47
7475438	42-18L2	02/25/2010 22:41	Rain - heavy	Tree Fell	Fused branch - overhead	12	3747.88
7473855	42-14L2	02/25/2010 23:59	Rain - heavy	Tree Fell	Fused branch - overhead	54	2001.05
7473957	42-14L3	02/25/2010 22:58	Rain - heavy	Tree Fell	Fused branch - overhead	149	2731.72
7475620	42-13L2	02/25/2010 23:38	Rain - heavy	Tree - Broken Limb	Transformer - overhead	5	3960.55
7475435	42-13L1	02/25/2010 22:50	Rain - heavy	Tree Fell	Main line - overhead	1382	3151.38
7473454	42-9L3	02/25/2010 23:10	Rain - heavy	Tree - Broken Limb	Transformer - overhead	10	782.15
7471788	41-7L1	02/25/2010 17:36	Rain - heavy	Tree Fell	Fused branch - overhead	73	251.13
7475657	42-13L1	02/25/2010 22:50	Rain - heavy	Tree Fell	Transformer - overhead	15	4104.47
7473331	42-18L2	02/25/2010 22:51	Rain - heavy	Tree Fell	Fused branch - overhead	51	1491.93
7475269	42-13L2	02/25/2010 22:48	Rain - heavy	Tree - Broken Limb	Fused branch - overhead	11	3620.92
7475292	42-14L2	02/25/2010 23:18	Rain - heavy	Tree Fell	Transformer - overhead	5	3602.85
7475425	42-14L2	02/25/2010 22:57	Rain - heavy	Tree Fell	Main line - overhead	303	3621.85
7474567	42-18L3	02/25/2010 23:23	Rain - heavy	Tree Fell	Main line - overhead	671	2773.28
7475405	42-9L3	02/25/2010 23:10	Rain - heavy	Tree Fell	Main line - overhead	1355	3943.52
7475129	42-18L2	02/25/2010 22:57	Rain - heavy	Tree Fell	Secondary/Service - overhead	1	3532.43
7473930	41-7L1	02/25/2010 23:23	Rain - light / moderate	Tree - Broken Limb	Fused branch - overhead	34	1999.6
7474653	42-14L2	02/25/2010 23:31	Rain - heavy	Tree Fell	Fused branch - overhead	35	2727.07
7475708	42-10L4	02/25/2010 23:44	Rain - heavy	Tree Fell	Secondary/Service - overhead	1	2703.92
7474012	41-7L1	02/25/2010 23:28	Rain - heavy	Tree - Broken Limb	Fused branch - overhead	33	2251.65

Event ID	Feeder(s)	Time Off	Weather	Cause	Classification	CI	Duration
7472948	42-10L1	02/25/2010 22:38	Rain - heavy	Tree Fell	Fused branch - overhead	333	2415
7473032	42-14L3	02/25/2010 22:15	Rain - heavy	Tree Fell	Main line - overhead	899	3640.08
7474496	42-14L2	02/25/2010 22:07	Rain - heavy	Tree Fell	Fused branch - overhead	120	2663.65
7472655	41-7L2	02/25/2010 23:46	Snow - wet	Tree - Broken Limb	Fused branch - overhead	38	643.87
7475596	42-9L3	02/25/2010 23:10	Rain - heavy	Tree - Broken Limb	Transformer - overhead	4	3948.25
7475588	42-9L3	02/25/2010 23:10	Rain - heavy	Tree - Broken Limb	Transformer - overhead	5	3941.18
7475479	42-18L4	02/25/2010 22:35	Rain - heavy	Tree Fell	Fused branch - overhead	103	3988.07
7475519	42-13L2	02/25/2010 23:35	Rain - heavy	Tree Fell	Transformer - overhead	1	3624.77
7475325	42-14L3	02/25/2010 23:24	Rain - heavy	Tree - Broken Limb	Fused branch - overhead	10	3516.5
7471849	41-7L1	02/25/2010 20:39	Rain - heavy	Tree Fell	Fused branch - overhead	79	178.25
7471626	41-39L2	02/25/2010 14:19	Rain - light / moderate	Tree Fell	Fused branch - overhead	8	86.57
7475658	42-14L1	02/25/2010 23:17	Rain - heavy	Tree Fell	Fused branch - overhead	49	3782.12
7475451	42-9L3	02/25/2010 23:10	Rain - heavy	Tree Fell	Transformer - overhead	3	3752.17
7475211	42-13L2	02/25/2010 23:19	Rain - heavy	Tree Fell	Fused branch - overhead	10	3544.38
7474572	42-14L3	02/25/2010 22:55	Rain - heavy	Tree Fell	Transformer - overhead	12	2819.68
7472268	42-13L2	02/25/2010 23:31	Snow - wet	Tree Fell	Main line - overhead	788	576.85
7472690	41-16L1	02/25/2010 23:51	Snow - wet	Tree Fell	Fused branch - overhead	18	864.65
7474868	42-10L4	02/25/2010 22:51	Rain - heavy	Unknown	Secondary/Service - overhead	9	3189.77
7472219	43-12L1	02/26/2010 1:06	Snow - wet	Device Failed	Transformer - U/G	16	434.23
7473430	41-7L1	02/26/2010 16:50	Rain - heavy	Deterioration	Transformer - overhead	1	227.3
7473452	41-7L1	02/26/2010 14:49	Rain - heavy	Deterioration	Transformer - overhead	9	120.45
7475490	41-7L1	02/26/2010 7:40	Rain - heavy	Deterioration	Fused branch - overhead	4	2044.32
7472438	43-12L2	02/26/2010 0:13	Snow - wet	Tree Fell	Main line - overhead	249	76.5
7472443	43-12L2	02/26/2010 0:28	Snow - wet	Tree Fell	Fused branch - overhead	275	812.42
7475553	42-13L2	02/26/2010 0:12	Rain - heavy	Tree - Broken Limb	Transformer - overhead	18	3820.12
7475709	42-10L2	02/26/2010 11:21	Rain - heavy	Tree Fell	Secondary/Service - overhead	1	2620.05
7475525	41-6L3	02/26/2010 6:36	Snow - wet	Tree - Broken Limb	Fused branch - overhead	2	3395.13
7475544	41-6L3	02/26/2010 8:54	Snow - wet	Tree Fell	Secondary/Service - overhead	1	3004.82
7475503	41-16L1	02/26/2010 16:04	Snow - wet	Tree Fell	Fused branch - overhead	1	2364.22
7474616	43-12L1	02/26/2010 14:20	Rain - heavy	Tree Fell	Secondary/Service - overhead	1	1921.22
7474010	41-6L3	02/26/2010 1:58	Rain - heavy	Tree Fell	Fused branch - overhead	46	1981.95
7474248	41-7L1	02/26/2010 0:10	Rain - heavy	Tree Fell	Secondary/Service - overhead	1	2451.7
7474367	41-1L2	02/26/2010 0:26	Rain - heavy	Tree Fell	Fused branch - overhead	16	2551.55
7475279	41-1L2	02/26/2010 9:29	Rain - heavy	Tree Fell	Secondary/Service - overhead	1	2982.95
7473208	42-9L3	02/26/2010 16:09	Rain - heavy	Tree - Broken Limb	Secondary/Service - overhead	1	273.43
7474500	42-13L2	02/26/2010 8:21	Rain - heavy	Tree Fell	Fused branch - overhead	20	2183.73

Event ID	Feeder(s)	Time Off	Weather	Cause	Classification	CI	Duration
7474330	41-39L2	02/26/2010 1:30	Rain - heavy	Tree Fell	Fused branch - overhead	2	2363.7
7474550	41-7L2	02/26/2010 10:29	Rain - light / moderate	Tree Fell	Secondary/Service - overhead	1	2071.08
7474968	42-13L2	02/26/2010 17:38	Rain - heavy	Tree Fell	Secondary/Service - overhead	1	812.33
7474867	42-10L4	02/26/2010 0:34	Rain - heavy	Tree Fell	Fused branch - overhead	43	2735.73
7472016	41-7L2	02/26/2010 0:07	Rain - heavy	Tree Fell	Fused branch - overhead	125	203.55
7475699	42-13L1	02/26/2010 20:25	Rain - heavy	Tree - Broken Limb	Secondary/Service - overhead	1	2403.45
7475610	42-14L2	02/26/2010 10:43	Rain - heavy	Tree Fell	Secondary/Service - overhead	1	3279.4
7475664	42-9L3	02/26/2010 12:12	Rain - heavy	Tree Fell	Secondary/Service - overhead	1	1909.77
7475601	43-12L1	02/26/2010 13:46	Snow - wet	Tree Fell	Fused branch - overhead	4	3002.98
7475549	42-9L3	02/26/2010 19:26	Rain - heavy	Tree Fell	Secondary/Service - overhead	1	2658.2
7474009	41-1L1	02/26/2010 4:38	Rain - heavy	Tree Fell	Secondary/Service - overhead	1	1843.7
7475056	42-13L2	02/26/2010 6:58	Rain - heavy	Tree Fell	Secondary/Service - overhead	1	2984.32
7474255	41-7L1	02/26/2010 5:29	Rain - heavy	Tree Fell	Fused branch - overhead	11	878.55
7474372	41-1L2	02/26/2010 8:31	Rain - heavy	Tree Fell	Secondary/Service - overhead	1	1945.35
7474371	41-1L2	02/26/2010 5:03	Rain - heavy	Tree Fell	Secondary/Service - overhead	1	2277.02
7474449	42-18L3	02/26/2010 18:27	Rain - heavy	Tree - Broken Limb	Fused branch - overhead	11	1517.93
7474502	41-7L2	02/26/2010 10:56	Rain - heavy	Tree Fell	Secondary/Service - overhead	1	2038.18
7474070	43-12L2	02/26/2010 14:38	Rain - heavy	Tree - Broken Limb	Fused branch - overhead	26	1404.37
7474807	42-13L1	02/26/2010 16:12	Rain - heavy	Tree Fell	Secondary/Service - overhead	1	2099.83
7472553	41-39L2	02/26/2010 3:03	Snow - wet	Tree - Broken Limb	Fused branch - overhead	163	312.95
7472752	41-16L1	02/26/2010 0:26	Rain - heavy	Tree - Broken Limb	Fused branch - overhead	41	869.08
7472712	41-7L1	02/26/2010 1:37	Snow - wet	Tree Fell	Fused branch - overhead	59	690.6
7475705	42-10L4	02/26/2010 10:57	Rain - heavy	Tree Fell	Secondary/Service - overhead	1	2975.55
7475704	42-13L1	02/26/2010 19:01	Rain - heavy	Tree Fell	Secondary/Service - overhead	1	2486.27
7475661	43-12L1	02/26/2010 11:22	Snow - wet	Tree Fell	Transformer - overhead	1	3362.53
7475600	43-8L1	02/26/2010 10:54	Snow - wet	Tree Fell	Secondary/Service - overhead	1	3185.27
7475548	43-12L1	02/26/2010 0:43	Snow - wet	Tree Fell	Transformer - overhead	2	3779.55
7475546	43-12L1	02/26/2010 7:04	Snow - wet	Tree Fell	Transformer - overhead	3	3396.13
7475543	43-12L1	02/26/2010 9:54	Snow - wet	Tree Fell	Secondary/Service - overhead	1	3130.18
7475542	41-16L1	02/26/2010 8:17	Snow - wet	Tree Fell	Secondary/Service - overhead	1	3084.4
7474608	43-12L1	02/26/2010 14:01	Rain - heavy	Tree Fell	Secondary/Service - overhead	1	1693.9
7472929	43-12L1	02/26/2010 8:43	Rain - heavy	Tree Fell	Secondary/Service - overhead	1	510.02
7472863	41-7L1	02/26/2010 0:11	Rain - heavy	Tree Fell	Fused branch - overhead	29	975.02
7472891	41-7L1	02/26/2010 7:05	Rain - heavy	Tree - Broken Limb	Fused branch - overhead	37	580.28
7472973	41-16L1	02/26/2010 7:44	Snow - wet	Tree - Broken Limb	Transformer - overhead	17	576.08
7473967	43-12L1	02/26/2010 6:55	Rain - heavy	Tree - Broken Limb	Transformer - overhead	9	1786.2

Event ID	Feeder(s)	Time Off	Weather	Cause	Classification	CI	Duration
7474292	41-11L1	02/26/2010 5:54	Rain - heavy	Tree Fell	Secondary/Service - overhead	1	1722.2
7475410	43-12L2	02/26/2010 14:38	Rain - heavy	Tree Fell	Fused branch - overhead	1	2751.82
7475109	41-6L3	02/26/2010 18:49	Rain - heavy	Tree Fell	Secondary/Service - overhead	1	2331.32
7472267	43-12L1	02/26/2010 1:09	Snow - wet	Tree - Broken Limb	Secondary/Service - overhead	1	486.43
7475545	41-1L2	02/26/2010 8:29	Snow - wet	Tree Fell	Secondary/Service - overhead	1	2842.18
7475538	41-16L1	02/26/2010 17:54	Snow - wet	Tree Fell	Secondary/Service - overhead	1	2739.15
7473047	43-12L1	02/26/2010 6:55	Rain - heavy	Tree - Broken Limb	Fused branch - overhead	17	712.78
7474369	41-1L2	02/26/2010 8:25	Rain - heavy	Tree Fell	Transformer - overhead	10	1974.43
7475271	41-7L2	02/26/2010 7:35	Rain - heavy	Tree Fell	Secondary/Service - overhead	1	3095.23
7474504	41-7L1	02/26/2010 2:02	Rain - heavy	Tree Fell	Secondary/Service - overhead	1	2336.55
7472975	41-7L1	02/26/2010 6:20	Rain - heavy	Tree Fell	Fused branch - overhead	39	689.47
7473951	41-7L1	02/26/2010 8:43	Rain - heavy	Tree Fell	Secondary/Service - overhead	1	1662.08
7473447	41-7L1	02/26/2010 7:45	Rain - heavy	Tree Fell	Secondary/Service - overhead	1	959.38
7473431	41-7L1	02/26/2010 15:34	Rain - heavy	Tree Fell	Secondary/Service - overhead	1	304.05
7474787	42-9L3	02/26/2010 11:25	Rain - heavy	Tree Fell	Secondary/Service - overhead	1	2371.53
7472807	41-16L1	02/26/2010 0:31	Snow - wet	Tree Fell	Fused branch - overhead	20	899.93
7474769	42-9L1	02/26/2010 1:49	Rain - heavy	Tree Fell	Secondary/Service - overhead	3	2933.13
7474768	42-9L1	02/26/2010 14:14	Rain - heavy	Tree - Broken Limb	Transformer - overhead	8	2186.8
7475707	42-13L1	02/26/2010 13:20	Rain - heavy	Tree Fell	Secondary/Service - overhead	1	2826.27
7475698	42-13L1	02/26/2010 18:35	Rain - heavy	Tree Fell	Secondary/Service - overhead	1	2512.88
7475523	41-6L3	02/26/2010 0:51	Snow - wet	Tree Fell	Fused branch - overhead	1	3670.78
7475521	41-16L1	02/26/2010 0:54	Snow - wet	Tree Fell	Fused branch - overhead	3	2477.17
7475554	42-13L2	02/26/2010 6:49	Rain - heavy	Tree - Broken Limb	Fused branch - overhead	10	3423.92
7474610	43-12L1	02/26/2010 12:30	Rain - heavy	Tree Fell	Secondary/Service - overhead	1	1786.38
7473170	43-12L1	02/26/2010 18:27	Rain - heavy	Tree Fell	Secondary/Service - overhead	1	101.4
7474388	41-7L1	02/26/2010 11:02	Rain - heavy	Tree Fell	Secondary/Service - overhead	1	1932.92
7474256	41-7L1	02/26/2010 18:57	Rain - heavy	Tree Fell	Secondary/Service - overhead	1	1332.62
7474127	41-39L2	02/26/2010 14:20	Rain - heavy	Tree Fell	Transformer - overhead	5	1488.45
7474607	43-12L2	02/26/2010 6:34	Rain - heavy	Tree - Broken Limb	Transformer - overhead	1	2378.33
7474447	41-7L2	02/26/2010 7:14	Rain - heavy	Tree Fell	Transformer - overhead	6	2189.05
7474492	41-6L2	02/26/2010 12:17	Rain - heavy	Tree - Broken Limb	Transformer - overhead	7	1930.48
7475667	42-13L2	02/26/2010 16:02	Rain - heavy	Tree Fell	Transformer - overhead	1	2758.03
7472972	41-16L1	02/26/2010 2:28	Snow - wet	Tree - Broken Limb	Fused branch - overhead	46	892.1
7473102	43-12L1	02/26/2010 1:14	Rain - heavy	Tree Fell	Secondary/Service - overhead	1	340.8
7475147	42-13L1	02/26/2010 16:43	Rain - heavy	Tree Fell	Transformer - overhead	9	2471.57
7472512	41-6L2	02/26/2010 1:01	Snow - wet	Tree - Broken Limb	Transformer - overhead	8	514.35

Event ID	Feeder(s)	Time Off	Weather	Cause	Classification	CI	Duration
7472552	41-39L2	02/26/2010 1:41	Snow - wet	Tree - Broken Limb	Fused branch - overhead	22	393.97
7473271	41-6L3	02/26/2010 1:23	Rain - heavy	Tree Fell	Fused branch - overhead	48	1263.4
7472368	41-7L2	02/26/2010 2:35	Snow - wet	Tree - Broken Limb	Secondary/Service - overhead	1	472.57
7475604	42-13L2	02/26/2010 7:11	Rain - heavy	Tree - Broken Limb	Fused branch - overhead	3	3300.83
7475663	42-9L3	02/26/2010 13:19	Rain - heavy	Tree Fell	Secondary/Service - overhead	1	1865.4
7475602	43-8L1	02/26/2010 13:47	Snow - wet	Tree Fell	Secondary/Service - overhead	1	3012.85
7475500	43-12L1	02/26/2010 15:47	Rain - heavy	Tree Fell	Transformer - overhead	4	2808.95
7472862	43-12L1	02/26/2010 7:36	Rain - heavy	Tree - Broken Limb	Fused branch - overhead	75	526.63
7474289	41-1L2	02/26/2010 11:31	Rain - heavy	Tree Fell	Secondary/Service - overhead	1	1789.68
7475131	42-18L2	02/26/2010 19:59	Rain - heavy	Tree Fell	Secondary/Service - overhead	1	2272.3
7472710	43-12L1	02/26/2010 0:55	Snow - wet	Tree - Broken Limb	Fused branch - overhead	118	634.87
7474614	43-12L1	02/26/2010 15:36	Rain - heavy	Tree Fell	Secondary/Service - overhead	1	1602.43
7474613	43-12L2	02/26/2010 14:38	Rain - heavy	Tree Fell	Secondary/Service - overhead	1	1899.65
7474609	43-12L1	02/26/2010 13:57	Rain - heavy	Tree Fell	Secondary/Service - overhead	1	1699.12
7473171	43-12L1	02/26/2010 18:40	Rain - heavy	Tree Fell	Secondary/Service - overhead	1	89.65
7475272	42-13L2	02/26/2010 5:06	Rain - heavy	Tree Fell	Transformer - overhead	6	3244.02
7475439	42-13L1	02/26/2010 21:13	Rain - heavy	Tree Fell	Secondary/Service - overhead	1	2403.1
7474493	41-16L1	02/26/2010 15:19	Rain - heavy	Tree Fell	Secondary/Service - overhead	1	1752.75
7474551	41-1L2	02/26/2010 5:09	Rain - heavy	Tree Fell	Secondary/Service - overhead	1	2433.03
7474270	41-1L2	02/26/2010 6:31	Rain - heavy	Tree Fell	Secondary/Service - overhead	1	2061.92
7471996	43-12L1	02/26/2010 0:50	Rain - heavy	Tree Fell	Fused branch - overhead	263	125.05
7472770	43-12L1	02/26/2010 1:05	Rain - heavy	Tree Fell	Fused branch - overhead	26	847.83
7472711	43-12L1	02/26/2010 1:02	Snow - wet	Tree - Broken Limb	Fused branch - overhead	150	627.1
7475524	41-1L1	02/26/2010 1:08	Snow - wet	Tree Fell	Secondary/Service - overhead	1	3718.78
7475563	42-14L1	02/26/2010 1:12	Snow - wet	Tree Fell	Fused branch - overhead	24	3550.6
7475498	42-18L4	02/26/2010 0:04	Rain - heavy	Tree Fell	Fused branch - overhead	51	3536
7474615	43-12L1	02/26/2010 6:46	Rain - heavy	Tree Fell	Secondary/Service - overhead	1	2373.7
7474259	41-7L1	02/26/2010 19:40	Freezing Rain or Sleet	Tree Fell	Secondary/Service - overhead	1	1294.27
7472870	41-7L1	02/26/2010 0:18	Rain - heavy	Tree Fell	Fused branch - overhead	73	853.48
7474329	41-6L2	02/26/2010 14:42	Rain - heavy	Tree Fell	Transformer - overhead	9	1657.55
7475683	42-18L3	02/26/2010 9:28	Rain - heavy	Tree - Broken Limb	Fused branch - overhead	30	3038.97
7474267	41-7L1	02/26/2010 3:12	Rain - heavy	Tree - Broken Limb	Transformer - overhead	3	2277.28
7473928	43-12L1	02/26/2010 5:38	Rain - heavy	Tree Fell	Secondary/Service - overhead	1	1833.08
7472436	41-1L2	02/26/2010 0:38	Snow - wet	Tree - Broken Limb	Fused branch - overhead	23	373.22
7472048	41-1L2	02/26/2010 0:57	Fair	Tree Fell	Fused branch - overhead	104	192.98
7472007	41-6L3	02/26/2010 0:56	Fair	Tree Fell	Fused branch - overhead	62	149.08

Event ID	Feeder(s)	Time Off	Weather	Cause	Classification	CI	Duration
7475172	42-9L3	02/26/2010 15:46	Rain - heavy	Tree Fell	Secondary/Service - overhead	1	2549.47
7474729	41-7L2	02/26/2010 11:16	Rain - heavy	Tree Fell	Secondary/Service - overhead	1	2237.42
7472703	41-7L1	02/26/2010 0:25	Snow - wet	Tree - Broken Limb	Secondary/Service - overhead	1	400.43
7475695	42-13L1	02/27/2010 11:15	Rain - heavy	Tree Fell	Secondary/Service - overhead	1	1515.08
7475268	42-13L2	02/27/2010 18:04	Rain - heavy	Tree Fell	Secondary/Service - overhead	1	1022.87
7474331	41-6L2	02/27/2010 15:29	Rain - heavy	Tree Fell	Secondary/Service - overhead	1	174.5
7474026	41-16L1	02/27/2010 12:05	Rain - heavy	Tree - Broken Limb	Fused branch - overhead	177	89.95
7473889	41-6L3	02/27/2010 10:10	Rain - heavy	Tree Fell	Secondary/Service - overhead	1	89.08
7474503	41-7L2	02/27/2010 15:01	Rain - heavy	Tree Fell	Secondary/Service - overhead	1	354.37
7475617	42-14L3	02/27/2010 20:58	Rain - heavy	Tree - Broken Limb	Fused branch - overhead	6	901.35
7475688	42-13L1	02/27/2010 19:02	Rain - heavy	Tree Fell	Secondary/Service - overhead	1	1548.93
7475694	42-13L1	02/27/2010 13:19	Rain - heavy	Tree Fell	Secondary/Service - overhead	1	1391.78
7474932	41-7L1	02/27/2010 21:20	Rain - light / moderate	Tree Fell	Secondary/Service - overhead	1	370.68
7474848	41-7L1	02/27/2010 22:40	Rain - heavy	Tree - Broken Limb	Transformer - overhead	3	289.6
7475580	43-12L1	02/27/2010 9:41	Snow - wet	Tree Fell	Secondary/Service - overhead	1	1860.57
7475619	42-18L4	02/27/2010 12:26	Rain - heavy	Tree Fell	Secondary/Service - overhead	1	1751.33
7475660	42-10L2	02/27/2010 19:51	Rain - heavy	Tree Fell	Secondary/Service - overhead	1	1413.43
7475648	42-13L2	02/27/2010 15:46	Rain - heavy	Tree Fell	Transformer - overhead	5	1619.1
7474332	41-6L2	02/27/2010 13:42	Rain - heavy	Tree Fell	Secondary/Service - overhead	1	281.95
7475693	42-10L4	02/27/2010 17:36	Rain - heavy	Tree Fell	Secondary/Service - overhead	1	1138.9
7474252	41-7L1	02/27/2010 8:21	Rain - heavy	Tree Fell	Secondary/Service - overhead	1	525.63
7474249	41-7L1	02/27/2010 8:17	Rain - heavy	Tree Fell	Secondary/Service - overhead	1	526.3
7474165	43-12L2	02/27/2010 10:03	Rain - heavy	Tree - Broken Limb	Fused branch - overhead	9	281.98
7475700	42-13L1	02/27/2010 10:28	Rain - heavy	Tree Fell	Secondary/Service - overhead	5	1561.5
7475686	42-14L3	02/27/2010 8:59	Rain - heavy	Tree Fell	Secondary/Service - overhead	1	2149.35
7474534	43-12L1	02/27/2010 9:30	Rain - heavy	Tree Fell	Transformer - overhead	1	659.65
7475540	41-16L1	02/27/2010 12:09	Snow - wet	Unknown	Transformer - overhead	2	1411.48
7475128	41-6L3	02/28/2010 5:22	Rain - heavy	Tree - Broken Limb	Fused branch - overhead	42	228.75
7475491	42-14L2	02/28/2010 13:52	Rain - heavy	Tree Fell	Secondary/Service - overhead	1	34.7
7475670	42-13L2	02/28/2010 18:58	Rain - heavy	Tree Fell	Secondary/Service - overhead	1	58.85
7475749	42-14L3	02/28/2010 19:49	Rain - heavy	Tree Fell	Secondary/Service - overhead	7	130.98
7475673	42-14L1	02/28/2010 9:38	Rain - heavy	Tree Fell	Secondary/Service - overhead	1	622.02
7475669	42-14L3	02/28/2010 8:21	Rain - heavy	Tree Fell	Secondary/Service - overhead	1	682.6
7475668	42-9L3	02/28/2010 9:18	Rain - heavy	Tree Fell	Secondary/Service - overhead	1	622.6
7475635	42-14L1	02/28/2010 17:28	Rain - heavy	Tree Fell	Secondary/Service - overhead	1	42.72
7475623	43-12L1	02/28/2010 15:41	Snow - wet	Tree Fell	Secondary/Service - overhead	1	121.57

Event ID	Feeder(s)	Time Off	Weather	Cause	Classification	CI	Duration
7475419	41-7L2	02/28/2010 8:33	Rain - heavy	Tree Fell	Secondary/Service - overhead	1	246.17
7475640	42-10L4	02/28/2010 13:40	Rain - heavy	Tree Fell	Secondary/Service - overhead	1	279.43
7475677	42-14L2	02/28/2010 10:14	Rain - heavy	Tree Fell	Secondary/Service - overhead	1	594.52

Granite State Electric Company
d/b/a National Grid

February 24, 2010 Storm
Total O&M Restoration Costs
Incurred Through December 31, 2011

Line No.	Description	Total Restoration Costs
1	Payroll charges excluding payroll overheads for GSE employees	\$ -
2	Charges for transportation on GSE vehicles	-
3	Charges from outside companies	7,763
4	Charges for materials and supplies	-
5	Charges for employee expenses	-
6	Total	<u>\$ 7,763</u>

**Granite State Electric Company
d/b/a National Grid**

O&M Restoration Costs associated with Storm of February 24, 2010

Line No.	Outside Companies	Jan-2011 (a)	Amount (b)
1	Items under \$10,000	\$ 7,763	\$ 7,763
2	Subtotal Outside Companies	\$ 7,763	\$ 7,763
3	Company Payroll	-	-
4	Transportation	-	-
5	Materials & Supplies	-	-
6	Employee Expenses	-	-
7	Total O&M Restoration Costs	\$ 7,763	\$ 7,763
8	Less Fairpoint Communications Billing	-	-
9	Amount Charged to Storm Fund	\$ 7,763	\$ 7,763

**Granite State Electric Company
d/b/a National Grid
Annual Storm Fund Report
March 7, 2011 Ice Storm**

The Company is providing the following description of the March 7, 2011 ice storm as Attachment 4 to its Annual Storm Fund Report for calendar year 2011 activity. Per the operational reporting requirements found in § 5 of Exhibit GSE-7 of the Company's Rate Plan Settlement in Docket No. DG 06-107, this Attachment will: (1) provide a description of the storm and (2) provide a summary of the extent of the damage to the distribution system, including the number of outages and length of outages.

1. Description of the Storm

The March 7, 2011 ice storm affected the communities of Lebanon, Hanover, Canaan, Plainfield, and Enfield. It affected approximately 5,300 customers during the first day and caused interruptions in 14 of 21 communities served by the Company. Despite the damage and large number of customer interruptions, the Company led a successful storm restoration effort, which succeeded in restoring electric service to its customers by March 9, 2011.

Overnight Sunday, March 6, into Monday, March 7, wet snow was predicted in the Lebanon area. The Company pre-staged two overhead line crews for the event, one crew for Lebanon and one crew for Charlestown. Shortly after 2 am on March 7, the Company experienced outages in the Blueberry Hill area in Hanover. The Company called in all remaining internal Lebanon crews at approximately 2 am. In addition to the overhead line crews, additional personnel were utilized to do a preliminary damage assessment. The Company requested outside assistance at approximately 5 am.

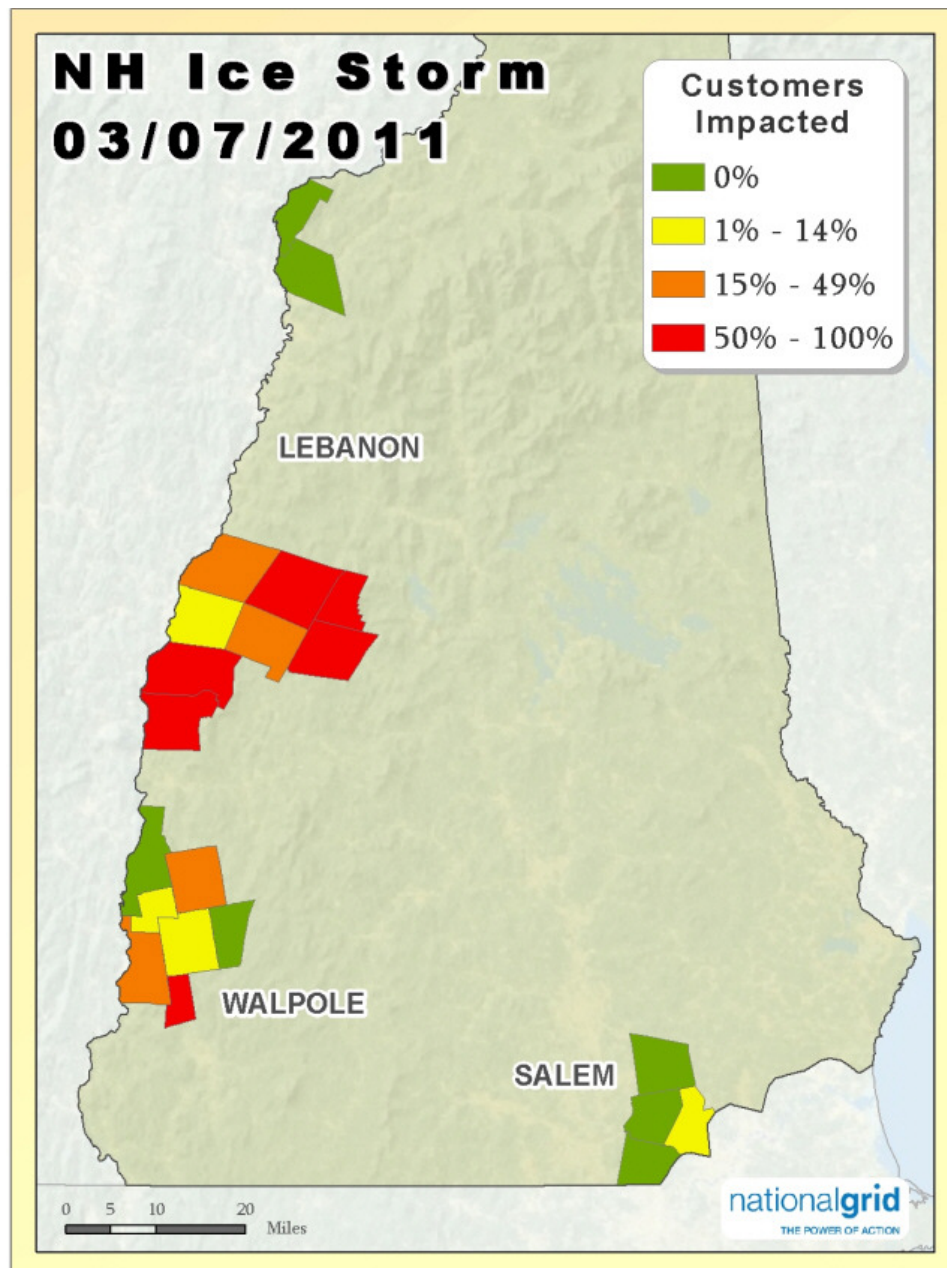
During the first day of the ice storm, there were approximately 5,300 customers out. The heavy rain had creating icing in the higher elevation areas in the Lebanon Service area such as Hardy Hill, Lebanon; Etna Road, Hanover; the Methodist Hill area in Plainfield; South Street, Canaan; and East Hill, Enfield. The icing created a significant amount of trees down and accretion (the accumulation of ice) was observed at over ½". There was minimal pole damage; however, pole-top equipment damage was prevalent including damage to crossarms and wires.

In addition to the initial tree work that was required to clear right-of-ways and roads for equipment repair, repeated tree failure in areas where electricity had been restored to customers created challenges for crews to clear calls and work on new outages. The need for tree crews was greater than previous wind storms since tree removal and trimming were needed before crews could perform the work necessary to restore power.

Figure 1
March 7, 2011 Ice Storm
Storm Damage



Figure 2
March 7, 2011 Ice Storm
Customers Impacted



2. Summary of the Extent of the Storm Damage

Due to the severe icing and downed trees, a number of the Company's customers were without power from Monday, March 7, 2011 until Wednesday, March 9, 2011. Exhibit 1, attached to this document, is a table that details the event log for the storm and observed damage to the Company's distribution system by feeder.

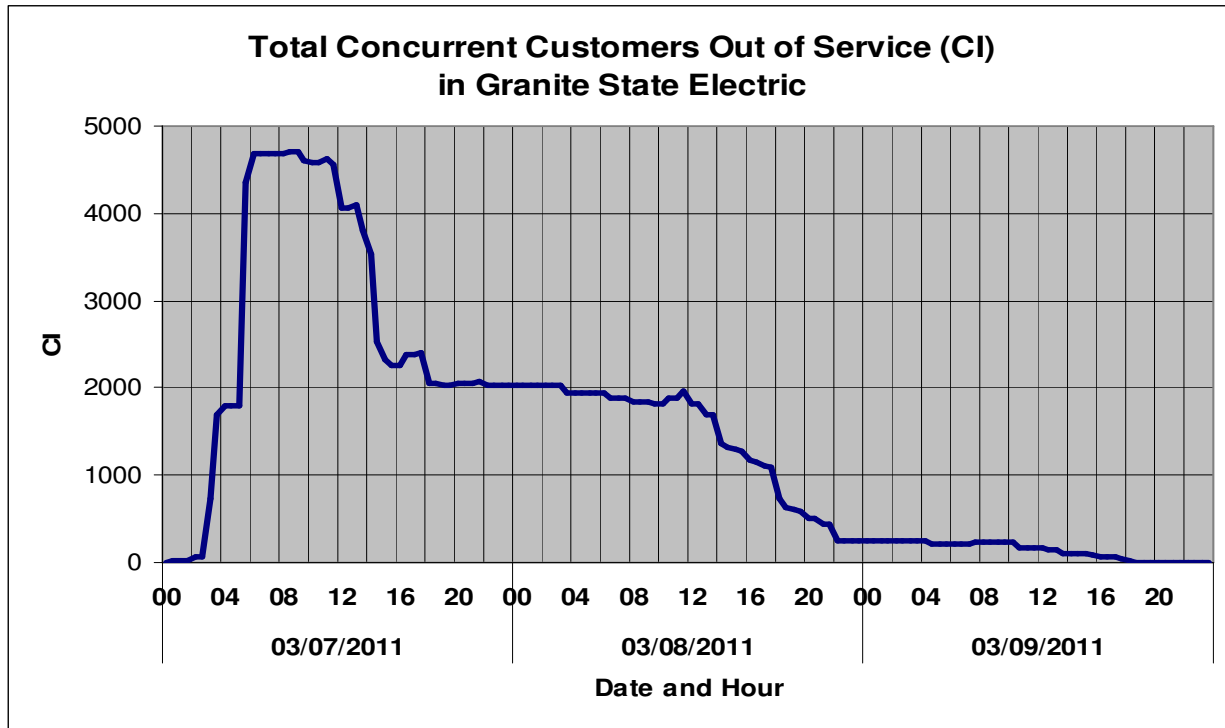
At the peak on March 7, 2011, 4,709 customers were interrupted. In response to these peak outages, the Company provided 49 contractor tree crews, 19 contractor line crews, 60 affiliate company line crews, and 7.5 Company line crews in the field to restore power. Additionally, the Company provided 4 damage assessment personnel, 60 wires down appraisers, and 10 personnel for general support of all restoration efforts.

All but 4 of the Company's customers affected were restored by 6 pm Wednesday, March 9. These customers were restored by 8:45 pm.

In all, the Company experienced 83 events, with 5,787 total customers interrupted during the March 7-9 storm. See Figure 3.

The following chart shows the number of customers without power by date and hour.

Figure 3
March 7, 2011 Ice Storm
Customers Without Power



After the storm, the Company reviewed the interruption data stored in the Interruption and Disturbance System. The Company determined that the March 7, 2011 ice storm qualified as a major storm based on the criteria established in the Company's Storm Contingency Fund as approved by the New Hampshire Public Utilities Commission.

Date	Troubles	Customers Interrupted	Customer Minutes Interrupted	Major Storm Qualification
03/07/2011	48	5,303	6,057,456	>45 Events
03/08/2011	20	403	112,168	----
03/09/2011	15	81	23,779	----

3. Details of Qualifying Costs Charged to the Storm Fund in 2011

Exhibit 2 details the costs associated with the March 7, 2011 ice storm charged to the storm fund during calendar year 2011.

**Granite State Electric Company
d/b/a National Grid
Annual Storm Fund Report
March 7, 2011 Ice Storm**

Exhibit 1 is a table that details the event log for the March 7, 2011 ice storm and observed damage to the Company's distribution system by feeder.

Event Log

Event ID	Feeder(s)	Time Off	Weather	Cause	Classification	CI	Duration
7550889	42-9L2	03/07/2011 9:15	Snow - wet	Deterioration	Main line - overhead	22	20
7548349	43-12L1	03/07/2011 1:25	Snow - wet	Flooding	Fused branch - U/G Direct Buried	4	1918
7547841	43-12L2	03/07/2011 5:43	Rain - heavy	Tree - Broken Limb	Fused branch - overhead	111	532
7547730	43-12L2	03/07/2011 11:32	Snow - wet	Tree - Broken Limb	Fused branch - overhead	91	183
7548881	41-7L1	03/07/2011 16:55	Snow - wet	Tree - Broken Limb	Fused branch - overhead	7	1520
7547990	41-1L2	03/07/2011 5:25	Snow - wet	Tree - Broken Limb	Fused branch - overhead	105	744
7548526	41-1L1	03/07/2011 17:52	Snow - wet	Tree - Broken Limb	Transformer - overhead	9	1127
7559570	41-1L2	03/07/2011 15:11	Snow - wet	Tree - Broken Limb	Secondary/Service - overhead	1	1717
7548827	43-12L1	03/07/2011 5:23	Snow - wet	Tree - Broken Limb	Fused branch - overhead	64	352
7547347	43-12L2	03/07/2011 5:41	Snow - wet	Tree - Broken Limb	Fused branch - overhead	119	218
7548356	41-1L2	03/07/2011 21:09	Snow - wet	Tree - Broken Limb	Fused branch - overhead	23	840
7548189	43-12L1	03/07/2011 17:29	Ice	Tree - Broken Limb	Fused branch - overhead	120	2859
7559669	43-12L2	03/07/2011 9:48	Snow - wet	Tree - Broken Limb	Secondary/Service - overhead	1	304
7547915	41-39L2	03/07/2011 13:10	Snow - wet	Tree - Broken Limb	Main line - overhead	218	265
7548091	41-39L2	03/07/2011 5:42	Ice	Tree - Broken Limb	Fused branch - overhead	42	963
7547863	41-6L3	03/07/2011 2:32	Snow - wet	Tree - Broken Limb	Fused branch - overhead	78	747
7548711	41-1L2	03/07/2011 13:40	Snow - wet	Tree Fell	Secondary/Service - overhead	1	1560
7549210	41-1L2	03/07/2011 3:42	Ice	Tree Fell	Main line - overhead	100	3267
7559677	41-1L2	03/07/2011 12:10	Snow - wet	Tree Fell	Secondary/Service - overhead	1	1926
7548430	43-12L2	03/07/2011 15:16	Snow - wet	Tree Fell	Fused branch - overhead	3	1188

Event ID	Feeder(s)	Time Off	Weather	Cause	Classification	CI	Duration
7559587	43-12L1	03/07/2011 5:18	Snow - wet	Tree Fell	Fused branch - overhead	21	3522
7559569	41-1L2	03/07/2011 8:30	Snow - wet	Tree Fell	Secondary/Service - overhead	1	1504
7549413	41-1L1, 41-7L1	03/07/2011 5:04	Snow - wet	Tree Fell	Main line - overhead	218 1	3372
7548690	43-12L1	03/07/2011 6:32	Snow - wet	Tree Fell	Fused branch - overhead	1	1968
7548755	43-12L1	03/07/2011 5:34	Snow - wet	Tree Fell	Fused branch - overhead	72	2019
7548688	41-1L2	03/07/2011 17:28	Snow - wet	Tree Fell	Secondary/Service - overhead	1	1202
7548816	41-7L1	03/07/2011 12:30	Snow - wet	Tree Fell	Fused branch - overhead	31	1530
7559567	43-12L2	03/07/2011 19:35	Snow - wet	Tree Fell	Secondary/Service - overhead	7	817
7548805	41-16L1	03/07/2011 1:47	Ice	Tree Fell	Fused branch - overhead	46	2572
7548818	41-7L2	03/07/2011 5:10	Ice	Tree Fell	Fused branch - overhead	185	2250
7559676	43-12L2	03/07/2011 11:31	Snow - wet	Tree Fell	Secondary/Service - overhead	1	339
7548752	41-1L2	03/07/2011 14:47	Snow - wet	Tree Fell	Secondary/Service - overhead	1	1353
7547903	43-12L2	03/07/2011 10:54	Snow - wet	Tree Fell	Fused branch - overhead	12	356
7559672	41-7L2	03/07/2011 13:34	Snow - wet	Tree Fell	Secondary/Service - overhead	1	1826
7559671	43-12L2	03/07/2011 6:54	Snow - wet	Tree Fell	Secondary/Service - overhead	1	1690
7548789	41-39L2	03/07/2011 10:53	Snow - wet	Tree Fell	Fused branch - overhead	22	1865
7549218	41-16L2	03/07/2011 8:10	Ice	Tree Fell	Secondary/Service - overhead	11	3107
7549215	41-1L1	03/07/2011 0:27	Snow - wet	Tree Fell	Fused branch - overhead	14	3454
7548839	41-1L2	03/07/2011 3:17	Ice	Tree Fell	Main line - overhead	973	2535
7559568	41-6L3	03/07/2011 16:35	Snow - wet	Tree Fell	Fused branch - overhead	1	315
7559674	41-7L1	03/07/2011 16:27	Snow - wet	Tree Fell	Secondary/Service - overhead	1	1185
7548843	43-12L1	03/07/2011 8:52	Snow - wet	Tree Fell	Secondary/Service - overhead	1	2069
7559668	43-12L1	03/07/2011 6:32	Snow - wet	Tree Fell	Secondary/Service - overhead	1	1559
7549441	41-7L2	03/07/2011 6:24	Ice	Tree Fell	Fused branch - overhead	3	3550
7548801	41-1L2	03/07/2011 7:51	Snow - wet	Tree Fell	Fused branch - overhead	5	1773
7548928	41-7L1	03/07/2011	Snow -	Tree Fell	Transformer - overhead	3	2016

Event ID	Feeder(s)	Time Off	Weather	Cause	Classification	CI	Duration
		14:44	wet				
7548913	41-16L1	03/07/2011 2:34	Ice	Tree Fell	Main line - overhead	584	3573
7559678	41-6L3	03/07/2011 8:01	Snow - wet	Unknown	Fused branch - overhead	2	553
7548858	41-16L1	03/08/2011 15:03	Snow - wet	Deterioration	Fused branch - overhead	90	284
7548880	43-12L2	03/08/2011 13:17	Snow - wet	Deterioration	Fused branch - overhead	1	491
7548829	43-12L2	03/08/2011 16:29	Snow - wet	Device Failed	Transformer - overhead	3	135
7548751	41-7L1	03/08/2011 12:21	Snow - wet	Tree - Broken Limb	Fused branch - overhead	31	289
7548809	43-12L2	03/08/2011 8:21	Ice	Tree - Broken Limb	Secondary/Service - overhead	1	554
7548791	41-7L1	03/08/2011 11:10	Snow - wet	Tree - Broken Limb	Fused branch - overhead	80	414
7548872	43-12L2	03/08/2011 15:59	Snow - wet	Tree Fell	Fused branch - overhead	8	297
7549220	41-7L1	03/08/2011 16:56	Ice	Tree Fell	Fused branch - overhead	6	1133
7548882	41-7L1	03/08/2011 7:43	Snow - wet	Tree Fell	Fused branch - overhead	8	766
7548756	43-12L2	03/08/2011 10:55	Snow - wet	Tree Fell	Transformer - overhead	6	95
7548970	41-1L2	03/08/2011 10:05	Snow - wet	Tree Fell	Secondary/Service - overhead	2	1035
7548750	43-12L2	03/08/2011 10:09	Snow - wet	Tree Fell	Fused branch - overhead	136	145
7548832	43-12L2	03/08/2011 13:31	Snow - wet	Tree Fell	Secondary/Service - overhead	1	288
7548918	41-7L1	03/08/2011 9:04	Snow - wet	Tree Fell	Fused branch - overhead	6	779
7548802	41-1L2	03/08/2011 12:59	Snow - wet	Tree Fell	Fused branch - overhead	15	225
7548929	41-7L1	03/08/2011 10:21	Snow - wet	Tree Fell	Secondary/Service - overhead	1	859
7549432	41-1L1	03/08/2011 20:31	Ice	Tree Fell	Fused branch - overhead	3	1206
7548677	41-7L2	03/08/2011 14:17	Snow - wet	Tree Fell	Fused branch - overhead	2	23
7548844	43-12L1	03/08/2011 17:17	Snow - wet	Tree Fell	Fused branch - overhead	2	133
7549217	41-16L1	03/08/2011 21:41	Ice	Tree Fell	Secondary/Service - overhead	1	1043
7549429	41-1L1	03/09/2011 10:54	Fair	Device Failed	Transformer - overhead	4	321
7549308	41-1L2	03/09/2011 10:13	Ice	Device Failed	Transformer - overhead	3	215
7549421	41-1L2	03/09/2011 14:02	Fair	Tree - Broken Limb	Fused branch - overhead	9	84

Event ID	Feeder(s)	Time Off	Weather	Cause	Classification	CI	Duration
7549328	41-1L2	03/09/2011 11:13	Ice	Tree - Broken Limb	Transformer - overhead	1	168
7549391	41-1L1	03/09/2011 11:46	Ice	Tree - Broken Limb	Secondary/Service - overhead	1	159
7549470	41-1L2	03/09/2011 16:38	Fair	Tree - Broken Limb	Secondary/Service - overhead	1	81
7549469	41-1L2	03/09/2011 16:34	Fair	Tree - Broken Limb	Secondary/Service - overhead	1	161
7549452	41-1L2	03/09/2011 17:00	Fair	Tree - Broken Limb	Secondary/Service - overhead	1	72
7549219	41-1L2	03/09/2011 8:50	Ice	Tree - Broken Limb	Transformer - overhead	3	195
7549446	41-16L1	03/09/2011 7:27	Ice	Tree - Broken Limb	Secondary/Service - overhead	3	618
7549445	41-16L1	03/09/2011 7:12	Ice	Tree Fell	Fused branch - overhead	10	630
7549208	41-1L1	03/09/2011 6:24	Snow - wet	Tree Fell	Secondary/Service - overhead	1	280
7549450	41-1L2	03/09/2011 17:17	Fair	Tree Fell	Fused branch - overhead	25	43
7549477	41-1L2	03/09/2011 13:48	Fair	Tree Fell	Fused branch - overhead	1	415
7549415	43-12L1	03/09/2011 6:39	Ice	Tree Fell	Fused branch - overhead	17	628

Granite State Electric Company
d/b/a National Grid

March 07, 2011 Storm
Total O&M Restoration Costs
Incurred Through December 31, 2011

Line No.	Description	Total Restoration Costs
1	Payroll charges excluding payroll overheads for GSE employees	\$ 156,062
2	Charges for transportation on GSE vehicles	7,625
3	Charges from outside companies	1,776,425
4	Charges for materials and supplies	74
5	Charges for employee expenses	<u>265</u>
6	Total	\$ 1,940,451
7	Less Fairpoint Communications Billing	<u>(\$127,494)</u>
8	Amount Charged to Storm Fund	<u><u>\$1,812,957</u></u>

Granite State Electric Company
d/b/a National Grid
O&M Restoration Costs associated with Storm of March 11, 2011

Line No.	Outside Companies	Mar-2011 (a)	Apr-2011 (b)	May-2011 (c)	Jun-2011 (c)	Jul-2011 (c)	Aug-2011 (c)	Sep-2011 (c)	Amount (d)
1	ABC Professional Tree Service Inc	\$ -	\$ 38,980	\$ -	\$ -	\$ -	\$ -	\$ -	\$ 38,980
2	Asplundh Tree Expert Co		188,062						188,062
3	HSBC Corporate Card Services		46,664						46,664
4	Lewis Tree Service Inc		35,686						35,686
5	State Electric Corporation		18,291						18,291
6	The Davey Tree Expert Company		28,647						28,647
7	Thirau LLC		311,307						311,307
8	Massachusetts Electric Company	655,158							655,158
9	The Narragansett Electric Company	127,964							127,964
10	National Grid USA Service Co.	134,556	18,205						152,761
11	Transfer from/(to) Capital		148,294						148,294
12	Vendors < \$10,000	4,859	6,996	8,289	109	2,753	21	1,584	24,609
13	Subtotal Outside Companies	\$ 922,537	\$ 841,133	\$ 8,289	\$ 109	\$ 2,753	\$ 21	\$ 1,584	\$ 1,776,425
14	Company Payroll	155,334	728	-	-	-	-	-	156,062
15	Transportation	7,562	63	-	-	-	-	-	7,625
16	Materials & Supplies	-	74						74
17	Employee Expenses	189	76						265
18	Total O&M Restoration Costs	\$ 1,085,623	\$ 842,073	\$ 8,289	\$ 109	\$ 2,753	\$ 21	\$ 1,584	\$ 1,940,451
19	Less Fairpoint Communications Billing	-	-	(127,494)	-	-	-	-	(127,494)
20	Amount Charged to Storm Fund	1,085,623	842,073	(119,205)	109	2,753	21	1,584	1,812,957

**Granite State Electric Company
d/b/a National Grid
Annual Storm Fund Report
Tropical Storm Irene – August 28, 2011**

The Company is providing the following description of the August 28, 2011 Tropical Storm Irene storm event as Attachment 5 to its Annual Storm Fund Report for calendar year 2011 activity. Per the operational reporting requirements found in § 5 of Exhibit GSE-7 of the Company's Rate Plan Settlement in Docket No. DG 06-107, this Attachment will: (1) provide a description of the storm and (2) provide a summary of the extent of the damage to the distribution system, including the number of outages and length of outages.

1. Description of the Storm

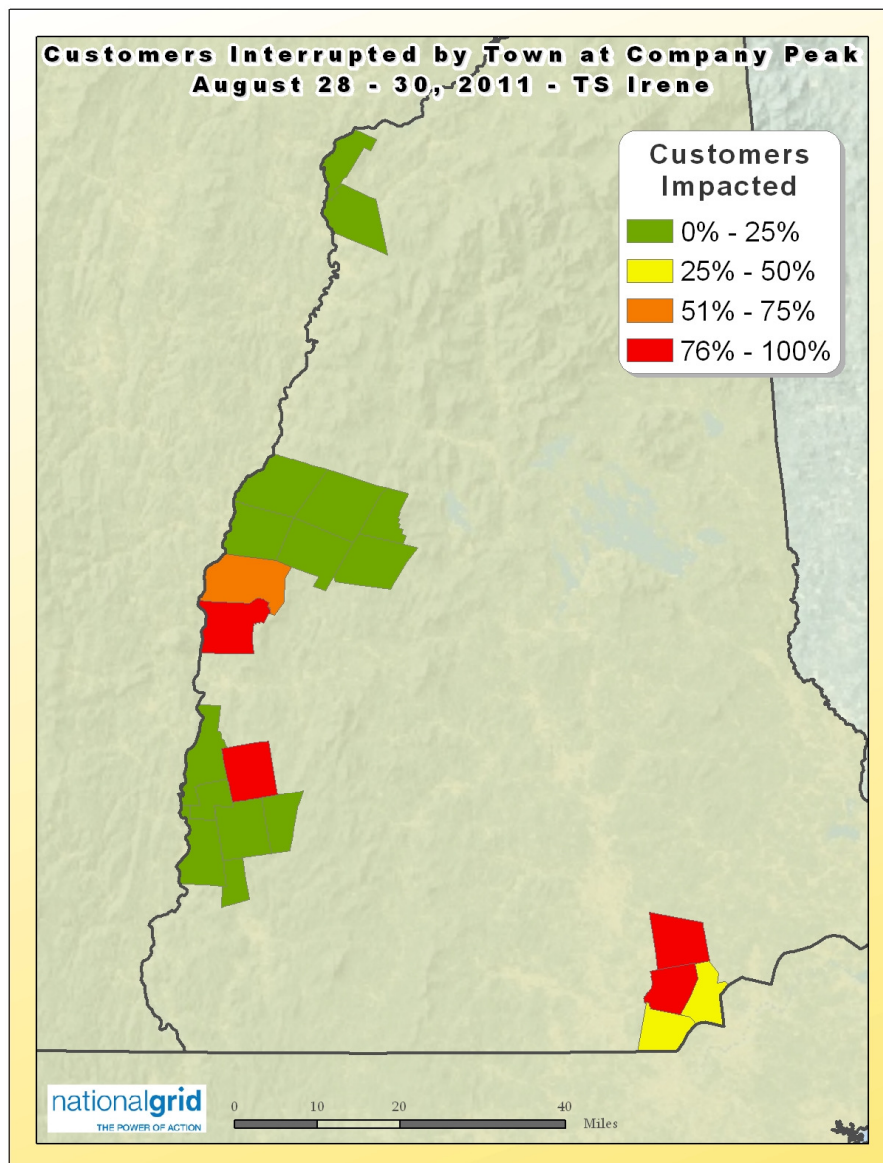
In the normal course of managing system operations, the Company continually monitors the weather. On August 23, 2011 when it became apparent that there was a risk of a hurricane coming to New England, the Company began planning for Irene's impact. Leadership analyzed storm plans and reviewed preparedness with suppliers and employees in anticipation of the storm. Formal reviews of hurricane preparation checklists were undertaken to ensure the Company was positioned to protect public safety, properly assess damage, and restore power as safely and efficiently as possible. This phase of emergency preparedness is referred to as the Anticipation Phase. During this phase, weather forecasts for New England predicted that a strong or low category 1 hurricane would take a very wide path through the region with the center going over the Berkshire Mountains in Massachusetts.

Hurricane Irene moved up the eastern seaboard on the United States during the week of August 22nd causing an estimated \$7 billion in damages and interrupting electric service to over 6 million customers. Irene impacted New England on August 28th as a strong tropical storm, bringing strong winds and significant rainfall.

2. **Summary of the Extent of the Storm Damage**

Due to the severe wind and downed trees, a number of the Company's customers were without power from Sunday, August 28, 2011 until Wednesday, August 30, 2011. See Figure 1 for peak outages by town.

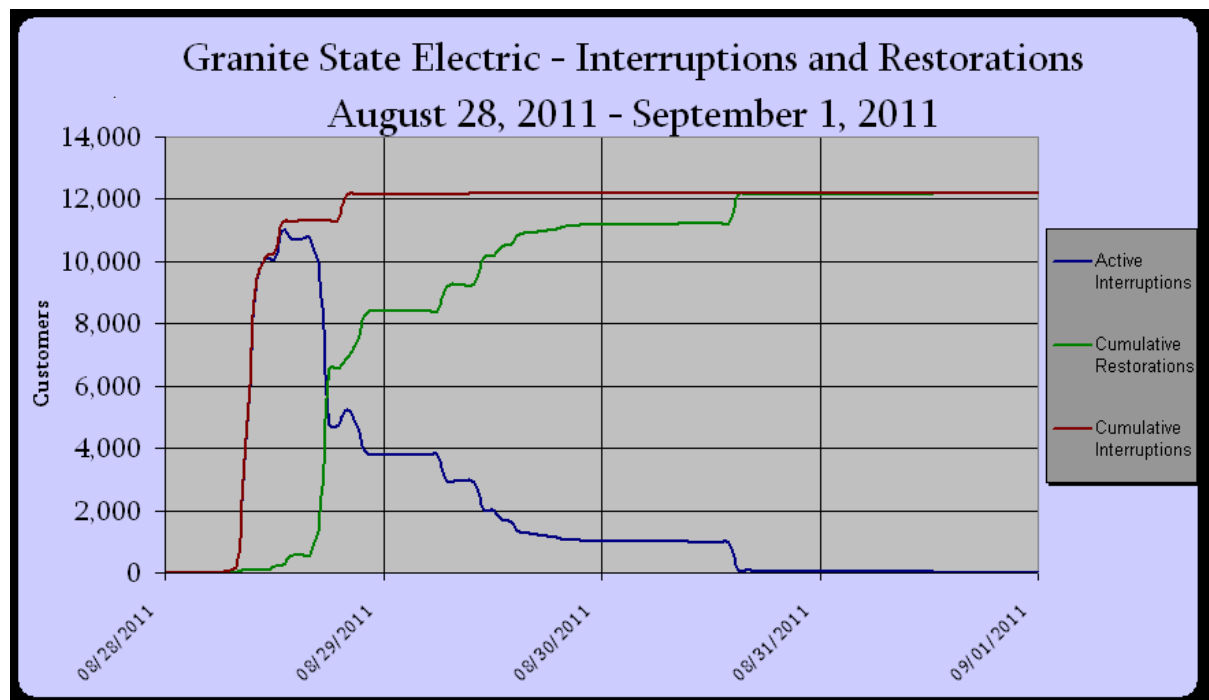
Figure 1
Tropical Storm Irene
Customers Impacted



At the peak, on August 28, 2011, approximately 11,400 customers were interrupted. In response to these peak outages, crews for New Hampshire were comprised of eight internal distribution line crews and a peak of 24 contractor crews. All of the 24 contractor crews were mobilized by the morning of August 29th. For tree crews, the Company mobilized a peak of 19 contractor tree crews. On August 28th, seven tree crews were working in New Hampshire. By the morning of August 29th, the total number of tree crews had increased to 19. In addition to utilizing Company employees, the Company mobilized a total of 5 wires down personnel.

Ninety percent (90%) of those peak customers were restored by August 29th, at approximately 11 a.m. All remaining customers were restored by August 30th. A total of approximately 15,300 of the Company's customers were impacted at different times over the course of the Tropical Storm Irene event as shown in Figure 2, which reflects the cumulative interruptions and restorations experienced by customers throughout the event.

Figure 2
Tropical Storm Irene
Customers Without Power



In all, the Company experienced 128 events, with approximately 15,300 total customers interrupted during the August 28, 2011 storm. See Exhibit 1, attached to this document, which is a table that details the event log for the storm and observed damage to the Company's distribution system by feeder.

After the storm, the Company reviewed the interruption data stored in the Interruption and Disturbance System. The Company determined that the August 28, 2011 Tropical Storm Irene event qualified as a major storm based on the criteria established in the Company's Storm Contingency Fund as approved by the New Hampshire Public Utilities Commission.

Date	Troubles (Events)	Customers Interrupted	Customer Minutes Interrupted	Major Storm Qualification
08/28/2011	90	14,690	6,791,557	>45 Events
08/29/2011	37	654	231,244	----
08/30/2011	1	1	41	----

3. Details of Qualifying Costs Charged to the Storm Fund in 2011

Exhibit 2 details the costs associated with the August 28, 2011 Tropical Storm Irene storm event charged to the storm fund during calendar year 2011.

**Granite State Electric Company
d/b/a National Grid
Annual Storm Fund Report
Tropical Storm Irene – August 28, 2011**

Exhibit 1 is a table that details the event log for the August 28, 2011 Tropical Storm Irene storm event and observed damage to the Company's distribution system by feeder.

Event Log

Event ID	Feeder(s)	Time Off	Weather	Cause	Classification	CI	Duration
7650108	42-14L1	08/28/2011 07:04	Rain - heavy	Tree - Broken Limb	Fused branch - overhead	20	80
7635509	42-14L1	08/28/2011 07:08	Rain - heavy	Animal	Fused branch - overhead	49	112
7628847	42-14L1	08/28/2011 07:12	Rain - heavy	Tree - Broken Limb	Transformer	2	77
7635510	42-14L2	08/28/2011 07:14	Rain - heavy	Tree Fell	Transformer	1	2,131
7650105	43-12L1	08/28/2011 07:39	Rain - heavy	Tree Fell	Fused branch - overhead	16	92
7628989	42-13L3	08/28/2011 08:20	Rain - heavy	Tree - Broken Limb	Fused branch - overhead	111	87
7635337	42-14L2	08/28/2011 08:54	Rain - heavy	Tree Fell	Secondary/Service - overhead	1	2,924
7650538	42-14L2	08/28/2011 08:56	Rain - heavy	Tree - Broken Limb	Fused branch - overhead	75	1,669
7650321	42-13L3	08/28/2011 09:19	Rain - heavy	Tree - Broken Limb	Main line - overhead	647	230
7631478	42-14L1	08/28/2011 09:22	Rain - heavy	Tree Fell	Fused branch - overhead	26	1,843
7650354	42-13L2	08/28/2011 09:53	Rain - heavy	Tree Fell	Main line - overhead	392	835
7650559	42-14L1	08/28/2011 10:03	Rain - heavy	Tree - Broken Limb	Fused branch - overhead	43	1,657
7650299	43-12L1	08/28/2011 10:13	Rain - heavy	Tree Fell	Fused branch - overhead	150	182
7635317	42-9L3	08/28/2011 10:17	Rain - heavy	Tree Fell	Fused branch - overhead	79	1,754
7635315	42-9L3	08/28/2011 10:24	Rain - heavy	Tree - Broken Limb	Fused branch - overhead	130	575
7643153	42-14L3	08/28/2011 10:28	Rain - heavy	Tree Fell	Fused branch - overhead	114	1,352
7630109	42-14L3	08/28/2011 10:29	Rain - heavy	Tree Fell	Fused branch - overhead	78	479
7650278	41-6L2	08/28/2011 10:31	Rain - heavy	Tree - Broken Limb	Secondary/Service - overhead	1	77
7650352	42-13L1	08/28/2011	Rain - heavy	Tree Fell	Main line - overhead		

Event ID	Feeder(s)	Time Off	Weather	Cause	Classification	CI	Duration
		10:33				2,094	455
7635320	42-14L2	08/28/2011 10:34	Rain - heavy	Tree Fell	Secondary/Service - overhead	1	2,762
7650513	42-14L2	08/28/2011 10:34	Rain - heavy	Tree - Broken Limb	Fused branch - overhead	240	1,481
7635436	42-9L3	08/28/2011 10:40	Rain - heavy	Tree Fell	Fused branch - overhead	137	763
7650288	43-12L1	08/28/2011 10:46	Rain - heavy	Tree Fell	Fused branch - overhead	6	84
7650355	42-13L3	08/28/2011 10:49	Rain - heavy	Tree Fell	Main line - overhead	1,995	436
7635767	42-18L2	08/28/2011 10:54	Rain - heavy	Tree Fell	Secondary/Service - overhead	116	1,716
7630997	42-14L3	08/28/2011 10:56	Rain - heavy	Tree - Broken Limb	Fused branch - overhead	263	1,443
7635370	42-13L2	08/28/2011 10:58	Rain - heavy	Tree - Broken Limb	Main line - overhead	697	530
7632086	42-9L2	08/28/2011 11:03	Rain - heavy	Tree Fell	Secondary/Service - overhead	1	1,951
7650306	43-12L2	08/28/2011 11:03	Rain - heavy	Tree Fell	Fused branch - overhead	1	147
7631597	42-13L1	08/28/2011 11:11	Rain - heavy	Tree Fell	Main line - overhead	2,094	404
7650309	43-12L2	08/28/2011 11:18	Rain - heavy	Tree Fell	Fused branch - overhead	1	132
7635393	42-14L1	08/28/2011 11:21	Rain - heavy	Tree Fell	Secondary/Service - overhead	2	1,710
7650314	41-7L1	08/28/2011 11:23	Rain - heavy	Tree Fell	Fused branch - overhead	74	141
7631751	42-14L2	08/28/2011 11:24	Rain - heavy	Tree Fell	Fused branch - overhead	11	1,806
7635314	42-14L3	08/28/2011 11:26	Rain - heavy	Tree - Broken Limb	Fused branch - overhead	59	1,354
7650290	41-1L1	08/28/2011 11:27	Rain - heavy	Tree Fell	Fused branch - overhead	23	63
7635333	42-14L3	08/28/2011 11:33	Rain - heavy	Tree Fell	Fused branch - overhead	148	1,407
7650313	43-8L1	08/28/2011 11:34	Rain - heavy	Tree - Broken Limb	Fused branch - overhead	298	163
7643140	42-14L3	08/28/2011 11:37	Rain - heavy	Tree Fell	Fused branch - overhead	53	1,403
7629310	41-1L2	08/28/2011 11:38	Rain - heavy	Tree Fell	Fused branch - overhead	105	39
7643150	42-14L3	08/28/2011 11:45	Rain - heavy	Tree Fell	Fused branch - overhead	60	1,365
7650399	42-14L1	08/28/2011 11:46	Rain - heavy	Tree Fell	Fused branch - overhead	233	603
7650336	41-7L1	08/28/2011 12:02	Rain - heavy	Tree - Broken Limb	Fused branch - overhead	40	280

Event ID	Feeder(s)	Time Off	Weather	Cause	Classification	CI	Duration
7635405	42-10L1	08/28/2011 12:14	Rain - heavy	Tree - Broken Limb	Fused branch - overhead	23	1,575
7635313	42-14L2	08/28/2011 12:20	Rain - light / moderate	Tree Fell	Transformer	9	1,821
7635338	42-14L3	08/28/2011 12:44	Rain - heavy	Tree - Broken Limb	Fused branch - overhead	37	1,395
7632654	42-9L3	08/28/2011 12:47	Rain - heavy	Tree Fell	Main line - overhead	476	460
7650621	42-18L3	08/28/2011 13:03	Rain - heavy	Unknown	Secondary/Service - overhead	1	1,596
7650324	41-1L2	08/28/2011 13:38	Rain - heavy	Tree - Broken Limb	Main line - overhead	969	113
7650359	43-12L1	08/28/2011 13:38	Rain - heavy	Tree Fell	Secondary/Service - overhead	1	270
7650343	43-12L1	08/28/2011 13:52	Rain - heavy	Tree Fell	Fused branch - overhead	150	191
7629633	43-12L2	08/28/2011 14:05	Rain - heavy	Tree Fell	Secondary/Service - overhead	1	129
7650340	43-8L1	08/28/2011 14:24	Rain - heavy	Tree Fell	Fused branch - overhead	7	112
7650391	41-39L2	08/28/2011 14:56	Rain - heavy	Tree Fell	Fused branch - overhead	1	224
7650373	41-7L1	08/28/2011 14:57	Rain - heavy	Tree Fell	Fused branch - overhead	4	291
7650371	41-7L1	08/28/2011 15:25	Rain - heavy	Tree Fell	Fused branch - overhead	40	19
7650370	43-12L1	08/28/2011 15:44	Rain - heavy	Tree Fell	Fused branch - overhead	1	135
7650360	41-16L1	08/28/2011 15:46	Rain - heavy	Tree - Broken Limb	Fused branch - overhead	1	143
7635522	42-10L2	08/28/2011 15:52	Rain - heavy	Unknown	Secondary/Service - overhead	1	1,710
7630587	41-11L2	08/28/2011 15:58	Rain - heavy	Unknown	Fused branch - overhead	1	809
7635339	42-14L1	08/28/2011 16:02	Rain - heavy	Unknown	Fused branch - overhead	6	1,680
7650358	41-1L2	08/28/2011 16:20	Rain - heavy	Tree Fell	Main line - overhead	969	48
7650368	43-12L1	08/28/2011 16:33	Rain - heavy	Tree Fell	Fused branch - overhead	1	86
7632106	42-14L2	08/28/2011 16:44	Rain - heavy	Tree Fell	Fused branch - overhead	1	1,562
7650364	43-12L1	08/28/2011 17:01	Rain - heavy	Tree Fell	Secondary/Service - overhead	1	88
7650375	41-1L2	08/28/2011 17:24	Rain - heavy	Tree Fell	Fused branch - overhead	1	151
7650388	43-12L1	08/28/2011 17:27	Rain - heavy	Tree Fell	Fused branch - overhead	72	1

Event ID	Feeder(s)	Time Off	Weather	Cause	Classification	CI	Duration
7650749	42-13L1	08/28/2011 17:30	Rain - heavy	Unknown	Secondary/Service - overhead	10	1,486
7650641	42-13L1	08/28/2011 17:36	Rain - heavy	Unknown	Secondary/Service - overhead	1	1,350
7650570	42-13L1	08/28/2011 17:40	Rain - heavy	Tree - Broken Limb	Fused branch - overhead	50	21
7650630	42-13L1	08/28/2011 17:40	Rain - heavy	Tree - Broken Limb	Fused branch - overhead	25	1,295
7650748	42-13L1	08/28/2011 17:43	Rain - heavy	Tree Fell	Fused branch - overhead	21	1,257
7635528	42-14L1	08/28/2011 17:43	Rain - heavy	Tree - Broken Limb	Secondary/Service - overhead	1	1,478
7650637	42-13L1	08/28/2011 17:49	Rain - heavy	Unknown	Secondary/Service - overhead	1	1,333
7650394	41-6L3	08/28/2011 18:21	Rain - heavy	Unknown	Customer Equipment	1	158
7650409	41-6L3	08/28/2011 18:21	Rain - heavy	Unknown	Customer Equipment	1	250
7650519	42-14L3	08/28/2011 18:41	Rain - heavy	Tree Fell	Fused branch - overhead	78	1,024
7650398	41-7L1	08/28/2011 18:50	Rain - heavy	Tree Fell	Fused branch - overhead	40	180
7650750	42-14L1	08/28/2011 18:53	Fog	Contamination	Main line - U/G in duct	1	2,260
7635552	42-14L1	08/28/2011 19:01	Rain - heavy	Unknown	Transformer	3	1,314
7632081	42-9L3	08/28/2011 20:13	Rain - heavy	Tree Fell	Secondary/Service - overhead	1	1,393
7650412	41-1L2	08/28/2011 20:17	Rain - heavy	Tree Fell	Main line - overhead	856	159
7650410	41-7L1	08/28/2011 20:54	Rain - heavy	Tree Fell	Fused branch - overhead	1	50
7650446	41-6L2	08/28/2011 21:24	Rain - heavy	Tree Fell	Fused branch - overhead	1	449
7650449	41-1L2	08/28/2011 21:43	Rain - heavy	Tree Fell	Main line - overhead	132	72
7650414	41-1L2	08/28/2011 21:54	Rain - heavy	Tree - Broken Limb	Main line - overhead	1	1
7630592	41-6L3	08/28/2011 22:14	Rain - heavy	Tree Fell	Secondary/Service - overhead	1	420
7630269	41-1L2	08/28/2011 22:26	Rain - heavy	Tree Fell	Secondary/Service - overhead	1	28
7630630	41-16L1	08/28/2011 22:29	Rain - heavy	Tree Fell	Secondary/Service - overhead	1	453
7650445	41-1L2	08/28/2011 22:51	Rain - heavy	Tree Fell	Fused branch - overhead	1	361
7650476	41-1L1	08/29/2011 01:24	Rain - heavy	Tree Fell	Fused branch - overhead	1	381
7650455	41-7L2	08/29/2011	Rain - heavy	Tree Fell	Fused branch - overhead		

Event ID	Feeder(s)	Time Off	Weather	Cause	Classification	CI	Duration
		01:39				1	341
7650751	42-13L2	08/29/2011 04:34	Rain - heavy	Tree - Broken Limb	Fused branch - overhead	1	1,810
7650592	42-13L2	08/29/2011 05:11	Rain - heavy	Tree Fell	Main line - overhead	357	359
7635598	42-13L3	08/29/2011 06:27	Rain - heavy	Tree Fell	Secondary/Service - overhead	1	1,754
7650478	41-6L3	08/29/2011 07:08	Rain - heavy	Tree - Broken Limb	Fused branch - overhead	1	102
7630808	43-12L1	08/29/2011 07:44	Rain - heavy	Tree - Broken Limb	Transformer	4	46
7650514	43-12L1	08/29/2011 07:44	Rain - heavy	Tree - Broken Limb	Fused branch - overhead	1	255
7632067	42-13L2	08/29/2011 09:32	Rain - heavy	Tree Fell	Secondary/Service - overhead	1	579
7631606	41-7L1	08/29/2011 10:03	Rain - heavy	Flooding	Secondary/Service - overhead	1	398
7650604	43-12L1	08/29/2011 10:12	Rain - heavy	Tree Fell	Fused branch - overhead	1	273
7650562	43-12L1	08/29/2011 10:22	Rain - heavy	Tree - Broken Limb	Fused branch - overhead	1	133
7635601	42-14L1	08/29/2011 10:29	Rain - heavy	Tree Fell	Secondary/Service - overhead	1	571
7631736	41-6L2	08/29/2011 10:30	Rain - heavy	Device Failed	Secondary/Service - overhead	1	395
7635429	42-14L3	08/29/2011 10:53	Rain - heavy	Tree Fell	Secondary/Service - overhead	1	462
7635385	42-14L3	08/29/2011 11:23	Rain - heavy	Tree - Broken Limb	Transformer	1	1,327
7635421	42-14L2	08/29/2011 12:12	Rain - heavy	Tree Fell	Fused branch - overhead	27	279
7635415	42-13L2	08/29/2011 12:23	Rain - heavy	Tree Fell	Secondary/Service - overhead	1	1,283
7650636	42-14L3	08/29/2011 12:23	Rain - heavy	Tree - Broken Limb	Fused branch - U/G Direct Buried	53	202
7635390	42-14L3	08/29/2011 12:41	Rain - heavy	Tree - Broken Limb	Secondary/Service - overhead	1	1,189
7635395	42-9L3	08/29/2011 12:43	Fair	Unknown	Transformer	7	61
7631743	42-14L3	08/29/2011 13:07	Rain - heavy	Tree - Broken Limb	Fused branch - overhead	18	278
7635386	42-14L3	08/29/2011 13:14	Rain - heavy	Tree - Broken Limb	Secondary/Service - overhead	1	1,203
7632348	42-14L3	08/29/2011 13:41	Rain - heavy	Tree Fell	Fused branch - overhead	37	513
7635734	42-9L3	08/29/2011 14:07	Rain - heavy	Tree Fell	Secondary/Service - overhead	1	1,304

Event ID	Feeder(s)	Time Off	Weather	Cause	Classification	CI	Duration
7650752	42-14L3	08/29/2011 14:14	Fair	Device Failed	Fused branch - overhead	78	387
7635384	42-13L3	08/29/2011 14:34	Rain - heavy	Tree Fell	Secondary/Service - overhead	1	1,091
7631602	43-12L2	08/29/2011 14:37	Rain - heavy	Flooding	Fused branch - U/G Direct Buried	1	111
7635418	42-14L1	08/29/2011 14:53	Rain - heavy	Tree - Broken Limb	Secondary/Service - overhead	9	267
7631749	42-14L3	08/29/2011 14:56	Rain - heavy	Tree - Broken Limb	Fused branch - overhead	10	154
7635402	42-13L3	08/29/2011 15:10	Rain - heavy	Tree - Broken Limb	Secondary/Service - overhead	1	1,055
7635388	42-14L2	08/29/2011 15:23	Rain - heavy	Tree - Broken Limb	Fused branch - overhead	28	236
7633208	42-9L3	08/29/2011 16:31	Rain - heavy	Tree Fell	Secondary/Service - overhead	1	964
7650677	42-9L3	08/29/2011 17:13	Rain - heavy	Unknown	Secondary/Service - overhead	1	928
7635399	42-13L3	08/29/2011 17:58	Rain - heavy	Tree Fell	Secondary/Service - overhead	1	61
7650753	42-14L3	08/29/2011 18:24	Rain - heavy	Tree - Broken Limb	Secondary/Service - overhead	1	846
7635668	42-9L3	08/29/2011 23:59	Rain - heavy	Tree - Broken Limb	Secondary/Service - overhead	1	635
7635396	42-14L3	08/30/2011 14:49	Rain - heavy	Tree - Broken Limb	Secondary/Service - overhead	1	41

Granite State Electric Company
d/b/a National Grid

August 28, 2011 Storm
Total O&M Restoration Costs
Incurred Through December 31, 2011

Line No.	Description	Total Restoration Costs
1	Payroll charges excluding payroll overheads for GSE employees	\$ 145,691
2	Charges for transportation on GSE vehicles	9,676
3	Charges from outside companies	912,367
4	Charges for materials and supplies	27,013
5	Charges for employee expenses	<u>232</u>
6	Total	<u><u>\$ 1,094,978</u></u>

Granite State Electric Company
d/b/a National Grid
O&M Restoration Costs associated with Storm of August 28, 2011

Line No.	Outside Companies	Aug-2011 (a)	Sep-2011 (b)	Oct-2011 (c)	Nov-2011 (d)	Dec-2011 (e)	Amount (f)
1	Asplundh Tree Expert Co	\$ -	\$ 51,897	\$ 41,232	\$ 88,774	\$ -	\$ 181,903
2	Grays Power Supply				10,939		10,939
3	I B Abel Inc				10,468		10,468
4	M J Electric LLC					12,404	12,404
5	N G Gilbert Corporation			285,845			285,845
6	SPE Utility Contractors LLC				10,757		10,757
7	Thirau LLC			116,753			116,753
8	Massachusetts Electric Company					12,474	12,474
9	Niagara Mohawk Power Corp		22,738				22,738
10	National Grid USA Service Co.		108,005	66,838			174,843
11	KeySpan Corporate Services, LLC		45,201				45,201
12	Adjustments				(64,271)		(64,271)
13	Vendors < \$10,000	3,670	12,040	11,747	52,567	12,288	92,312
14	Subtotal Outside Companies	\$ 3,670	\$ 239,881	\$ 522,416	\$ 109,234	\$ 37,166	\$ 912,367
15	Company Payroll	-	144,191	-	1,500	-	145,691
16	Transportation	-	9,676	-	-	-	9,676
17	Materials & Supplies	587	15,751	10,675	-	-	27,013
18	Employee Expenses	-	232	-	-	-	232
19	Total O&M Restoration Costs	\$ 4,257	\$ 409,731	\$ 533,090	\$ 110,734	\$ 37,166	\$ 1,094,978
20	Less Fairpoint Communications Billing	-	-	-	-	-	-
21	Amount Charged to Storm Fund	\$ 4,257	\$ 409,731	\$ 533,090	\$ 110,734	\$ 37,166	\$ 1,094,978

**Granite State Electric Company
d/b/a National Grid
Annual Storm Fund Report
October 29, 2011 Snow Storm**

The Company is providing the following description of the October 29, 2011 snow storm as Attachment 6 to its Annual Storm Fund Report for calendar year 2011 activity. Per the operational reporting requirements found in § 5 of Exhibit GSE-7 of the Company's Rate Plan Settlement in Docket No. DG 06-107, this Attachment will: (1) provide a description of the storm and (2) provide a summary of the extent of the damage to the distribution system, including the number of outages and length of outages.

1. Description of the Storm

In the normal course of managing system operations, the Company continually monitors the weather. Beginning on October 26, 2011, when it became apparent that there was a risk of a storm coming to New England, operational calls were held among operations management personnel to discuss the weather forecast and planning efforts for the possibility of an as yet unclassified storm event.

As part of this planning, leadership analyzed storm plans and reviewed preparedness with suppliers and employees in anticipation of the storm. Reviews of storm preparation checklists were undertaken to ensure the Company was positioned to protect public safety, properly assess damage, and restore power as safely and efficiently as possible. As a result of this planning, and as the forecast for the event worsened as described below, at noon on October 28th, in accordance with the Company's Electric Emergency Procedures ("EEP"), the Incident Command Structure ("ICS") was activated at the Regional and Branch levels.

The Company's meteorology service anticipated a storm system that would lead from a rain/snow mix to some light snowfall accumulation across New England. Early on Thursday, October 27th, forecasters began including light accumulations of 2 to 4 inches.

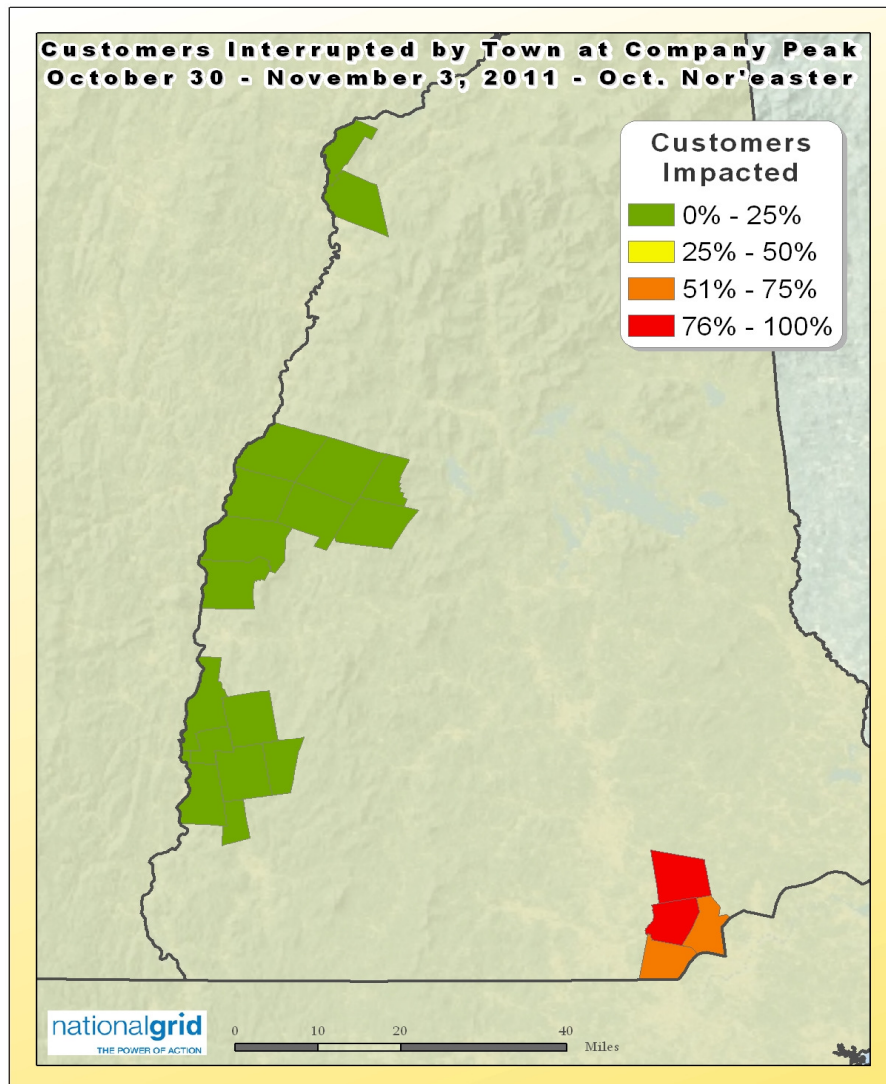
Late in the afternoon of Thursday, October 27th, forecasters increased snowfall totals to the 6 to 10 inch range. By late morning on Friday, October 28th, the Company's forecasts were indicating 7 to 12 inches of wet snowfall across a large portion of New England. Early Saturday morning, October 29th, the amount of snowfall forecasted was relatively unchanged.

Snow accumulations across New Hampshire were generally up to a foot of snow, with many higher elevation locations across southern New Hampshire picking up over 20 inches of snowfall. The highest total reported snowfall in New Hampshire was 31 inches in Jaffrey. By Sunday morning, October 30th, snow tapered off across much of southern New England.

2. Summary of the Extent of the Storm Damage

Due to the severe snow, wind and downed trees, a number of the Company's customers were without power from Sunday, October 30, 2011 until Thursday, November 3, 2011. See Exhibit 1 for peak outages by Town.

Figure 1
October 29, 2011 Snow Storm
Customers Impacted

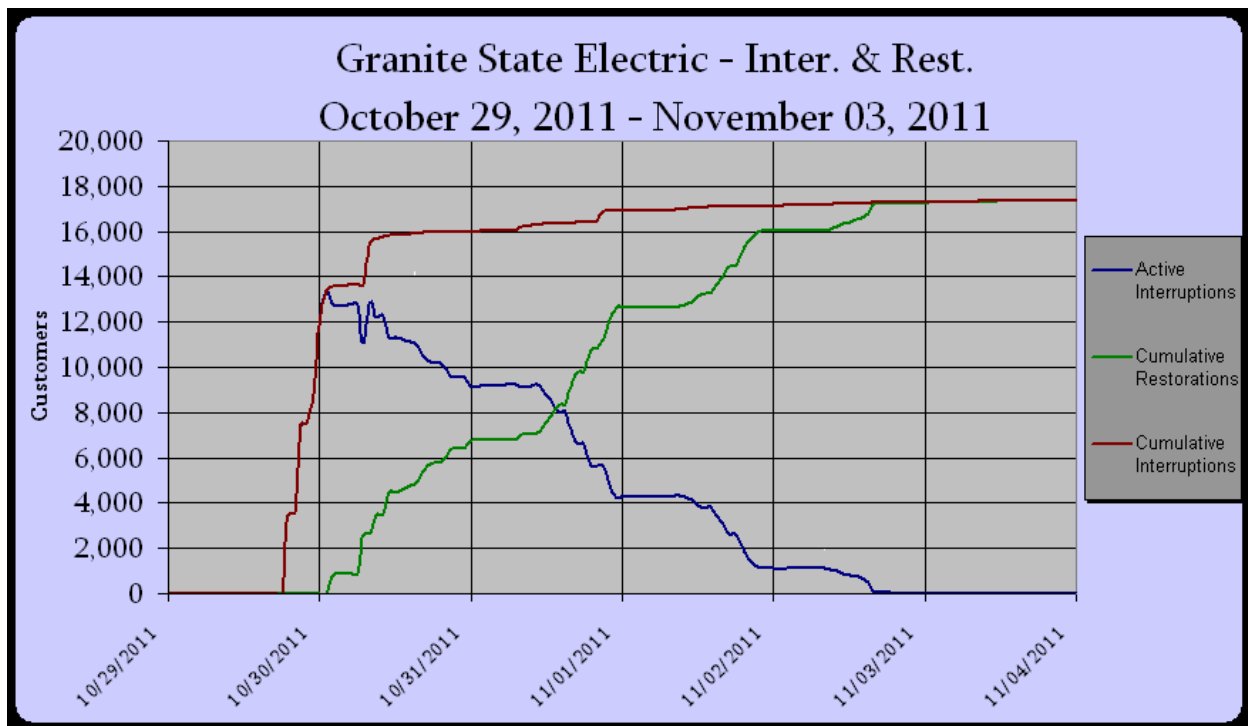


At the peak on October 30, 2011, approximately 13,300 customers were interrupted. In response to these peak outages, crews for New Hampshire were comprised of eight internal distribution line crews and a peak of 17 contractor crews. Eight of the 17 contractor crews were mobilized by the morning of October 31st, five additional

contractor crews arrived by the morning of November 1st, with the remaining four contractor crews in New Hampshire by the afternoon of November 1st. For tree crews, the Company mobilized a peak of 31 contractor tree crews. On October 30th, four tree crews were working in New Hampshire. By the morning of October 31st, the total number of tree crews had increased to 29, and by the morning of November 1st, the total number of tree crews had increased to 31. In addition to utilizing Company employees, the Company mobilized a total of 13 damage assessment personnel and 12 wires down personnel.

Ninety percent (90%) of those peak customers were restored by November 1st, at approximately 8 p.m. All remaining customers were restored by late in the day on November 3rd. A total of approximately 16,900 of the Company's customers were impacted at different times over the course of the October snow storm, as shown on Figure 2, which reflects the cumulative interruptions and restorations experienced by customers throughout the event.

Figure 2
October 29, 2011 Snow Storm
Customers Without Power



In all, the Company experienced 221 events, with approximately 16,900 total customers interrupted during the October 29, 2011 snow storm. See Exhibit 1, attached to this document, which is a table that details the event log for the storm and observed damage to the Company's distribution system by feeder.

After the storm, the Company reviewed the interruption data stored in the Interruption and Disturbance System. The Company determined that the October 29, 2011 snow storm qualified as a major storm based on the criteria established in the Company's Storm Contingency Fund as approved by the New Hampshire Public Utilities Commission.

Date	Troubles (Events)	Customers Interrupted	Customer Minutes Interrupted	Major Storm Qualification
10/29/2011	23	12,557	26,956,313	----
10/30/2011	59	3,421	7,224,334	>45 Events
10/31/2011	59	560	899,710	----
11/01/2011	43	213	232,336	----
11/02/2011	37	142	50,410	----

3. Details of Qualifying Costs Charged to the Storm Fund in 2011

Exhibit 2 details the costs associated with the October 29, 2011 snow storm charged to the storm fund during calendar year 2011.

**Granite State Electric Company
d/b/a National Grid
Annual Storm Fund Report
October 29, 2011 Snow Storm**

Exhibit 1 is a table that details the event log for the October 29, 2011 snow storm and observed damage to the Company's distribution system by feeder.

Event Log

Event ID	Feeder(s)	Time Off	Weather	Cause	Classification	CI	Duration
7658753	42-9L3	10/29/2011 17:16	Snow - wet	Tree - Broken Limb	Fused branch - overhead	15	177
7662228	42-13L1	10/29/2011 18:23	Snow - wet	Tree - Broken Limb	Main line - overhead	2,094	4,507
7658246	42-14L1	10/29/2011 18:25	Snow - wet	Tree Fell	Main line - overhead	1,786	5,565
7668784	42-14L3	10/29/2011 18:25	Snow - wet	Tree Fell	Main line - overhead	1,946	5,438
7660646	42-13L1	10/29/2011 18:26	Snow - wet	Tree Fell	Transformer	12	5,221
7662184	42-9L3	10/29/2011 19:16	Snow - wet	Tree Fell	Fused branch - overhead	168	1,497
7657655	42-13L3	10/29/2011 20:02	Snow - wet	Tree - Broken Limb	Main line - overhead	1,997	2,598
7657494	42-10L2	10/29/2011 20:06	Snow - wet	Tree Fell	Fused branch - overhead	443	293
7661164	42-9L3	10/29/2011 20:13	Snow - wet	Tree Fell	Fused branch - overhead	16	5,418
7659662	42-9L3	10/29/2011 20:13	Snow - wet	Tree Fell	Fused branch - overhead	136	3,714
7662227	42-13L2, 42-9L1	10/29/2011 20:59	Snow - wet	Tree Fell	Main line - overhead	2,333	5,103
7658788	42-10L2	10/29/2011 21:33	Snow - wet	Tree - Broken Limb	Fused branch - overhead	42	1,032
7662105	42-18L4	10/29/2011 22:05	Snow - wet	Tree - Broken Limb	Fused branch - overhead	103	844
7658772	42-18L2	10/29/2011 22:39	Snow - wet	Tree - Broken Limb	Transformer	12	983
7659950	42-18L2	10/29/2011 22:43	Snow - wet	Tree Fell	Secondary/Service - overhead	1	3,930
7659832	42-18L2	10/29/2011 22:44	Snow - wet	Tree Fell	Fused branch - overhead	17	3,812
7658827	42-10L1	10/29/2011 23:12	Snow - wet	Tree - Broken Limb	Fused branch - overhead	242	1,940
7659824	42-10L1	10/29/2011 23:16	Snow - wet	Tree Fell	Fused branch - overhead	192	3,767

Event ID	Feeder(s)	Time Off	Weather	Cause	Classification	CI	Duration
7657670	42-18L3	10/29/2011 23:43	Snow - wet	Tree - Broken Limb	Main line - overhead	640	504
7659937	42-10L1	10/29/2011 23:45	Snow - wet	Tree - Broken Limb	Transformer	10	3,858
7666884	42-10L1	10/29/2011 23:58	Snow - wet	Tree - Broken Limb	Fused branch - overhead	15	3,839
7657497	43-8L1	10/29/2011 23:58	Snow - wet	Tree - Broken Limb	Main line - overhead	299	82
7658108	42-18L4	10/29/2011 23:59	Snow - wet	Tree Fell	Fused branch - overhead	38	1,032
7659239	42-10L1	10/30/2011 00:38	Snow - wet	Tree - Broken Limb	Fused branch - overhead	74	906
7659936	42-10L1	10/30/2011 00:38	Snow - wet	Tree Fell	Transformer	13	3,802
7657633	43-12L2	10/30/2011 00:43	Snow - wet	Tree - Broken Limb	Fused branch - overhead	118	130
7657647	42-10L4	10/30/2011 00:44	Snow - wet	Tree Fell	Main line - overhead	656	3,777
7657661	41-7L2	10/30/2011 01:03	Snow - wet	Tree - Broken Limb	Fused branch - overhead	32	386
7657711	41-39L2	10/30/2011 01:04	Snow - wet	Tree - Broken Limb	Fused branch - overhead	42	526
7659987	42-10L2	10/30/2011 01:13	Snow - wet	Tree - Broken Limb	Secondary/Service - overhead	1	3,814
7659982	42-10L2	10/30/2011 01:13	Snow - wet	Tree - Broken Limb	Secondary/Service - overhead	1	3,810
7660342	42-18L4	10/30/2011 01:16	Snow - wet	Tree Fell	Transformer	13	3,949
7658325	42-18L4	10/30/2011 01:42	Snow - wet	Tree - Broken Limb	Fused branch - overhead	52	1,129
7657842	41-6L3	10/30/2011 01:53	Snow - wet	Tree - Broken Limb	Fused branch - overhead	25	537
7657975	41-7L1	10/30/2011 02:02	Snow - wet	Tree Fell	Secondary/Service - overhead	1	689
7659988	42-10L4	10/30/2011 03:11	Snow - wet	Tree - Broken Limb	Secondary/Service - overhead	1	3,697
7657641	43-12L1	10/30/2011 03:43	Snow - wet	Tree - Broken Limb	Transformer	6	96
7657653	43-12L1	10/30/2011 03:48	Snow - wet	Tree - Broken Limb	Transformer	2	123
7657679	41-6L2	10/30/2011 03:53	Snow - wet	Tree - Broken Limb	Fused branch - overhead	20	274
7657656	43-8L1	10/30/2011 04:53	Snow - wet	Tree - Broken Limb	Transformer	18	116
7659837	42-10L4	10/30/2011 06:23	Snow - wet	Tree - Broken Limb	Fused branch - overhead	16	3,366
7659097	42-10L2	10/30/2011 06:26	Snow - wet	Tree Fell	Fused branch - overhead	25	1,689

Event ID	Feeder(s)	Time Off	Weather	Cause	Classification	CI	Duration
7657917	41-16L1	10/30/2011 06:53	Snow - wet	Tree - Broken Limb	Fused branch - overhead	2	367
7660303	42-13L3	10/30/2011 07:00	Snow - wet	Tree - Broken Limb	Fused branch - overhead	29	3,695
7660317	42-13L3	10/30/2011 07:13	Fair	Tree Fell	Fused branch - overhead	21	3,693
7659945	42-14L2	10/30/2011 07:13	Snow - wet	Tree Fell	Main line - overhead	1,696	4,792
7657695	43-12L1	10/30/2011 07:14	Snow - wet	Tree - Broken Limb	Transformer	2	127
7659147	42-13L3	10/30/2011 07:24	Snow - wet	Tree - Broken Limb	Fused branch - overhead	52	1,616
7660184	42-18L3	10/30/2011 07:37	Snow - wet	Tree Fell	Secondary/Service - overhead	1	3,605
7659941	42-10L4	10/30/2011 07:42	Snow - wet	Unknown	Transformer	7	3,385
7659916	42-10L4	10/30/2011 07:43	Snow - wet	Tree - Broken Limb	Fused branch - overhead	16	3,358
7660173	42-18L3	10/30/2011 07:44	Snow - wet	Tree Fell	Transformer	33	3,585
7660328	42-13L3	10/30/2011 07:47	Snow - wet	Tree Fell	Transformer	12	3,729
7660197	42-18L3	10/30/2011 07:59	Snow - wet	Tree Fell	Secondary/Service - overhead	1	3,589
7660199	42-18L3	10/30/2011 08:13	Snow - wet	Tree Fell	Secondary/Service - overhead	1	3,576
7660301	42-13L3	10/30/2011 08:24	Snow - wet	Tree Fell	Fused branch - overhead	49	3,668
7659355	42-18L4	10/30/2011 08:26	Snow - wet	Tree Fell	Fused branch - overhead	58	520
7659913	42-18L4	10/30/2011 09:18	Snow - wet	Tree Fell	Fused branch - overhead	103	3,257
7657963	43-12L1	10/30/2011 09:20	Snow - wet	Tree Fell	Fused branch - overhead	6	286
7659659	42-13L2	10/30/2011 09:31	Snow - wet	Tree Fell	Secondary/Service - overhead	1	2,793
7659912	42-10L4	10/30/2011 09:47	Snow - wet	Tree Fell	Fused branch - overhead	7	3,230
7659961	42-18L4	10/30/2011 10:14	Snow - wet	Tree - Broken Limb	Transformer	5	3,255
7659946	42-10L4	10/30/2011 10:40	Snow - wet	Tree Fell	Fused branch - overhead	19	3,209
7657984	43-12L2	10/30/2011 10:41	Snow - wet	Tree Fell	Fused branch - overhead	42	237
7660332	42-13L3	10/30/2011 10:58	Snow - wet	Unknown	Transformer	5	3,540
7659407	42-10L2	10/30/2011 12:58	Snow - wet	Tree Fell	Fused branch - overhead	42	1,985

Event ID	Feeder(s)	Time Off	Weather	Cause	Classification	CI	Duration
7659990	42-10L1	10/30/2011 13:11	Snow - wet	Tree Fell	Secondary/Service - overhead	1	3,100
7658017	43-12L1	10/30/2011 13:57	Snow - wet	Tree - Broken Limb	Transformer	1	71
7666758	42-14L2	10/30/2011 14:46	Fair	Tree Fell	Secondary/Service - overhead	1	4,511
7659995	42-10L2	10/30/2011 14:49	Fair	Tree - Broken Limb	Secondary/Service - overhead	1	3,005
7661228	42-14L1	10/30/2011 14:50	Fair	Tree - Broken Limb	Secondary/Service - overhead	1	4,551
7660203	42-10L2	10/30/2011 14:54	Fair	Tree Fell	Secondary/Service - overhead	1	3,177
7660215	42-10L2	10/30/2011 14:55	Fair	Tree Fell	Secondary/Service - overhead	1	3,182
7660091	42-18L2	10/30/2011 15:00	Fair	Tree Fell	Secondary/Service - overhead	1	3,084
7659342	42-18L4	10/30/2011 15:02	Snow - wet	Tree - Broken Limb	Fused branch - overhead	38	1,765
7659992	42-10L4	10/30/2011 15:20	Fair	Tree Fell	Secondary/Service - overhead	1	2,973
7660347	42-13L3	10/30/2011 16:14	Fair	Tree Fell	Fused branch - overhead	8	3,054
7659710	42-18L4	10/30/2011 16:43	Snow - wet	Tree - Broken Limb	Fused branch - overhead	33	2,566
7660357	42-13L3	10/30/2011 16:44	Fair	Tree - Broken Limb	Secondary/Service - overhead	1	3,222
7658394	41-16L1	10/30/2011 18:16	Snow - wet	Tree - Broken Limb	Fused branch - overhead	4	178
7660653	42-14L3	10/30/2011 21:48	Fair	Tree - Broken Limb	Secondary/Service - overhead	1	3,598
7660398	42-14L3	10/30/2011 21:52	Fair	Tree - Broken Limb	Secondary/Service - overhead	1	3,010
7660913	42-14L1	10/31/2011 01:36	Fair	Tree Fell	Fused branch - overhead	61	3,648
7660946	42-13L2	10/31/2011 05:16	Fair	Tree Fell	Transformer	8	3,449
7659402	42-14L3	10/31/2011 07:23	Fair	Tree Fell	Fused branch - overhead	7	874
7660966	42-14L3	10/31/2011 07:27	Fair	Tree Fell	Transformer	9	3,336
7659296	42-9L3	10/31/2011 07:43	Fair	Tree Fell	Fused branch - overhead	81	660
7659295	42-9L3	10/31/2011 07:49	Fair	Tree Fell	Fused branch - overhead	62	652
7660363	42-13L2	10/31/2011 07:51	Fair	Tree Fell	Secondary/Service - overhead	1	2,331
7660175	42-13L2	10/31/2011 08:45	Fair	Tree Fell	Transformer	13	2,087

Event ID	Feeder(s)	Time Off	Weather	Cause	Classification	CI	Duration
7660437	42-18L3	10/31/2011 09:00	Fair	Tree - Broken Limb	Secondary/Service - overhead	1	2,396
7666856	42-9L3	10/31/2011 09:06	Fair	Tree - Broken Limb	Fused branch - overhead	1	3,246
7660435	42-9L1	10/31/2011 09:13	Fair	Tree - Broken Limb	Secondary/Service - overhead	1	2,382
7659348	42-9L3	10/31/2011 09:19	Fair	Tree - Broken Limb	Fused branch - overhead	41	626
7660361	42-10L2	10/31/2011 09:31	Fair	Tree Fell	Secondary/Service - overhead	1	2,225
7660336	42-9L3	10/31/2011 09:34	Fair	Tree Fell	Transformer	14	2,188
7659309	42-9L3	10/31/2011 09:43	Fair	Tree Fell	Fused branch - overhead	27	573
7660583	42-14L3	10/31/2011 09:51	Fair	Tree Fell	Fused branch - overhead	6	369
7666876	42-9L3	10/31/2011 10:22	Fair	Tree Fell	Transformer	12	658
7659698	42-9L3	10/31/2011 11:53	Fair	Tree - Broken Limb	Transformer	4	1,387
7662097	42-14L1	10/31/2011 11:53	Fair	Tree Fell	Transformer	13	3,082
7661027	42-14L1	10/31/2011 13:26	Fair	Tree Fell	Secondary/Service - overhead	1	3,014
7666769	42-14L2	10/31/2011 13:43	Fair	Tree - Broken Limb	Secondary/Service - overhead	1	3,137
7660440	42-13L3	10/31/2011 14:49	Fair	Tree - Broken Limb	Secondary/Service - overhead	1	2,051
7659776	42-14L2	10/31/2011 14:57	Fair	Tree Fell	Fused branch - overhead	27	1,309
7660788	42-9L3	10/31/2011 15:10	Fair	Tree Fell	Secondary/Service - overhead	1	2,720
7660131	42-10L2	10/31/2011 15:19	Fair	Tree Fell	Secondary/Service - overhead	1	1,666
7660989	42-14L2	10/31/2011 15:32	Fair	Tree Fell	Fused branch - overhead	6	2,860
7660962	42-14L3	10/31/2011 16:57	Fair	Tree Fell	Transformer	10	2,764
7662107	42-14L1	10/31/2011 17:01	Fair	Tree Fell	Secondary/Service - overhead	1	2,803
7660257	42-14L1	10/31/2011 17:14	Fair	Tree Fell	Fused branch - overhead	7	1,635
7660939	42-14L2	10/31/2011 17:14	Fair	Tree Fell	Fused branch - overhead	2	2,727
7660997	42-14L3	10/31/2011 17:14	Fair	Tree Fell	Secondary/Service - overhead	1	2,764
7660692	42-14L3	10/31/2011 17:15	Fair	Tree Fell	Transformer	6	2,477

Event ID	Feeder(s)	Time Off	Weather	Cause	Classification	CI	Duration
7661136	42-14L3	10/31/2011 17:15	Fair	Tree - Broken Limb	Secondary/Service - overhead	1	2,905
7666889	42-14L1	10/31/2011 17:23	Fair	Tree Fell	Secondary/Service - overhead	1	2,784
7660855	42-14L1	10/31/2011 18:36	Fair	Tree - Broken Limb	Secondary/Service - overhead	1	2,590
7661043	42-14L3	10/31/2011 19:13	Fair	Tree Fell	Secondary/Service - overhead	1	2,685
7660369	42-14L3	10/31/2011 19:23	Fair	Tree Fell	Secondary/Service - overhead	1	1,644
7660936	42-13L1	10/31/2011 19:23	Fair	Tree Fell	Transformer	5	2,596
7660991	42-14L3	10/31/2011 19:33	Fair	Tree Fell	Transformer	7	2,623
7660365	42-9L3	10/31/2011 19:43	Fair	Tree - Broken Limb	Secondary/Service - overhead	1	1,621
7661343	42-13L1	10/31/2011 19:54	Fair	Tree Fell	Secondary/Service - overhead	1	2,917
7660153	42-14L1	10/31/2011 19:57	Fair	Tree Fell	Fused branch - overhead	62	1,402
7659736	42-13L1	10/31/2011 20:24	Fair	Tree Fell	Fused branch - overhead	11	937
7661018	42-14L1	10/31/2011 20:44	Fair	Tree Fell	Transformer	2	2,568
7660358	42-13L1	10/31/2011 20:57	Fair	Tree - Broken Limb	Secondary/Service - overhead	1	1,530
7660444	42-13L1	10/31/2011 20:57	Fair	Tree - Broken Limb	Secondary/Service - overhead	1	1,688
7661335	42-13L1	10/31/2011 21:13	Fair	Tree - Broken Limb	Secondary/Service - overhead	1	2,832
7660448	42-13L1	10/31/2011 21:13	Fair	Tree Fell	Secondary/Service - overhead	1	1,674
7661348	42-13L1	10/31/2011 21:13	Fair	Tree Fell	Secondary/Service - overhead	1	2,841
7660352	42-13L1	10/31/2011 21:13	Fair	Tree Fell	Fused branch - overhead	4	1,388
7660449	42-13L1	10/31/2011 21:13	Fair	Tree - Broken Limb	Secondary/Service - overhead	1	1,676
7660451	42-13L1	10/31/2011 21:13	Fair	Tree - Broken Limb	Secondary/Service - overhead	1	1,677
7661327	42-14L1	10/31/2011 21:23	Fair	Tree - Broken Limb	Secondary/Service - overhead	1	2,814
7659718	42-13L2	10/31/2011 21:23	Fair	Tree Fell	Transformer	5	853
7661002	42-14L1	10/31/2011 21:34	Fair	Tree Fell	Transformer	4	2,506
7660452	42-13L1	10/31/2011 21:43	Fair	Tree - Broken Limb	Secondary/Service - overhead	1	1,648

Event ID	Feeder(s)	Time Off	Weather	Cause	Classification	CI	Duration
7660453	42-13L1	10/31/2011 21:53	Fair	Tree - Broken Limb	Secondary/Service - overhead	1	1,639
7660779	42-13L2	10/31/2011 23:30	Fair	Tree Fell	Secondary/Service - overhead	1	2,212
7660668	42-14L2	10/31/2011 23:36	Fair	Tree - Broken Limb	Fused branch - overhead	14	2,071
7659957	42-14L2	11/01/2011 00:40	Fair	Tree - Broken Limb	Fused branch - overhead	12	948
7661230	42-14L1	11/01/2011 06:23	Fair	Tree - Broken Limb	Secondary/Service - overhead	1	2,180
7660126	42-14L2	11/01/2011 06:33	Fair	Tree - Broken Limb	Secondary/Service - overhead	1	751
7660953	42-14L2	11/01/2011 06:46	Fair	Tree - Broken Limb	Fused branch - overhead	9	1,929
7661149	42-14L3	11/01/2011 07:37	Fair	Tree - Broken Limb	Secondary/Service - overhead	1	2,052
7661139	42-14L3	11/01/2011 08:00	Fair	Tree - Broken Limb	Secondary/Service - overhead	1	2,023
7660455	42-13L2	11/01/2011 08:13	Fair	Tree - Broken Limb	Secondary/Service - overhead	1	1,022
7661172	42-14L1	11/01/2011 08:21	Fair	Tree - Broken Limb	Secondary/Service - overhead	1	2,027
7660516	42-13L1	11/01/2011 08:26	Fair	Tree Fell	Transformer	11	1,192
7666803	42-14L2	11/01/2011 08:33	Fair	Tree - Broken Limb	Secondary/Service - overhead	1	2,025
7666994	42-14L2	11/01/2011 08:33	Fair	Tree - Broken Limb	Secondary/Service - overhead	1	2,025
7660662	42-14L2	11/01/2011 08:42	Fair	Tree Fell	Fused branch - overhead	35	1,516
7660945	42-13L2	11/01/2011 08:44	Fair	Tree - Broken Limb	Secondary/Service - overhead	1	1,801
7660251	42-14L1	11/01/2011 09:00	Fair	Tree Fell	Secondary/Service - overhead	1	683
7660329	42-9L1	11/01/2011 10:12	Fair	Tree Fell	Transformer	17	705
7660652	42-13L1	11/01/2011 10:33	Fair	Tree Fell	Transformer	18	1,390
7661140	42-14L3	11/01/2011 10:43	Fair	Tree - Broken Limb	Secondary/Service - overhead	1	1,862
7660359	42-18L2	11/01/2011 10:45	Fair	Tree Fell	Secondary/Service - overhead	1	708
7661197	42-14L2	11/01/2011 11:13	Fair	Tree - Broken Limb	Secondary/Service - overhead	1	1,867
7660536	42-13L1	11/01/2011 11:19	Fair	Tree - Broken Limb	Secondary/Service - overhead	1	1,095
7661190	42-14L2	11/01/2011 11:43	Fair	Tree - Broken Limb	Secondary/Service - overhead	1	1,834

Event ID	Feeder(s)	Time Off	Weather	Cause	Classification	CI	Duration
7660503	42-18L4	11/01/2011 11:57	Fair	Tree - Broken Limb	Secondary/Service - overhead	1	928
7660839	42-14L2	11/01/2011 12:46	Fair	Tree Fell	Fused branch - overhead	28	1,480
7659843	41-6L3	11/01/2011 13:27	Fair	Animal	Fused branch - overhead	42	40
7661436	42-9L3	11/01/2011 13:50	Fair	Tree Fell	Secondary/Service - overhead	1	1,970
7660538	42-13L1	11/01/2011 13:53	Fair	Tree Fell	Secondary/Service - overhead	1	944
7661214	42-14L2	11/01/2011 15:28	Fair	Tree - Broken Limb	Secondary/Service - overhead	1	1,623
7661070	42-14L3	11/01/2011 15:51	Fair	Tree - Broken Limb	Secondary/Service - overhead	1	1,466
7661341	42-13L1	11/01/2011 15:57	Fair	Tree - Broken Limb	Secondary/Service - overhead	1	1,713
7660539	42-13L1	11/01/2011 16:01	Fair	Tree - Broken Limb	Secondary/Service - overhead	1	817
7660605	42-14L2	11/01/2011 16:46	Fair	Tree - Broken Limb	Secondary/Service - overhead	1	925
7660540	42-13L1	11/01/2011 16:56	Fair	Tree Fell	Secondary/Service - overhead	1	764
7661674	42-14L3	11/01/2011 17:13	Fair	Tree - Broken Limb	Secondary/Service - overhead	1	2,133
7661145	42-14L3	11/01/2011 17:13	Fair	Tree - Broken Limb	Secondary/Service - overhead	1	1,475
7660781	42-13L3	11/01/2011 17:34	Fair	Tree - Broken Limb	Secondary/Service - overhead	1	1,131
7661699	42-14L1	11/01/2011 17:39	Fair	Tree - Broken Limb	Secondary/Service - overhead	1	2,202
7660695	42-14L3	11/01/2011 17:53	Fair	Tree - Broken Limb	Transformer	4	1,003
7661511	42-14L1	11/01/2011 18:29	Fair	Tree - Broken Limb	Secondary/Service - overhead	1	1,787
7660743	42-14L3	11/01/2011 19:15	Fair	Tree Fell	Fused branch - overhead	4	972
7661102	42-14L2	11/01/2011 19:55	Fair	Tree - Broken Limb	Secondary/Service - overhead	1	1,256
7661514	42-14L1	11/01/2011 20:10	Fair	Tree - Broken Limb	Secondary/Service - overhead	1	1,688
7661202	42-14L2	11/01/2011 20:29	Fair	Tree - Broken Limb	Secondary/Service - overhead	1	1,312
7661173	42-14L2	11/01/2011 22:00	Fair	Tree - Broken Limb	Secondary/Service - overhead	1	1,207
7660690	42-13L1	11/02/2011 01:48	Fair	Tree - Broken Limb	Fused branch - overhead	28	518
7661079	42-14L1	11/02/2011 06:16	Fair	Device Failed	Transformer	2	610

Event ID	Feeder(s)	Time Off	Weather	Cause	Classification	CI	Duration
7661340	42-13L2	11/02/2011 07:49	Fair	Tree Fell	Secondary/Service - overhead	1	759
7661175	42-14L2	11/02/2011 08:11	Fair	Tree Fell	Secondary/Service - overhead	1	598
7661438	42-9L1	11/02/2011 08:24	Fair	Tree - Broken Limb	Secondary/Service - overhead	1	857
7661117	42-14L2	11/02/2011 08:26	Fair	Tree - Broken Limb	Secondary/Service - overhead	1	520
7661141	42-14L3	11/02/2011 08:32	Fair	Tree - Broken Limb	Secondary/Service - overhead	1	555
7660933	42-9L1	11/02/2011 08:51	Fair	Tree - Broken Limb	Transformer	16	347
7661718	42-18L4	11/02/2011 08:53	Fair	Tree Fell	Secondary/Service - overhead	1	1,319
7661138	42-14L1	11/02/2011 08:59	Fair	Tree - Broken Limb	Secondary/Service - overhead	1	523
7660745	42-14L1	11/02/2011 09:27	Fair	Tree Fell	Fused branch - overhead	50	119
7660681	42-14L3	11/02/2011 09:28	Fair	Tree - Broken Limb	Secondary/Service - overhead	1	49
7661540	42-14L2	11/02/2011 09:28	Fair	Tree - Broken Limb	Secondary/Service - overhead	1	917
7661016	42-14L1	11/02/2011 09:59	Fair	Tree - Broken Limb	Transformer	8	324
7666954	42-14L1	11/02/2011 10:13	Fair	Tree Fell	Secondary/Service - overhead	1	643
7661346	42-10L1	11/02/2011 10:23	Fair	Tree - Broken Limb	Secondary/Service - overhead	1	610
7661115	42-14L2	11/02/2011 10:41	Fair	Tree - Broken Limb	Secondary/Service - overhead	1	384
7661216	42-14L2	11/02/2011 10:45	Fair	Tree Fell	Secondary/Service - overhead	1	466
7661237	42-14L1	11/02/2011 10:49	Fair	Tree - Broken Limb	Secondary/Service - overhead	1	476
7661006	42-13L2	11/02/2011 11:43	Fair	Tree - Broken Limb	Secondary/Service - overhead	1	220
7661004	42-9L3	11/02/2011 11:47	Fair	Tree - Broken Limb	Secondary/Service - overhead	1	215
7661338	42-13L1	11/02/2011 12:13	Fair	Tree - Broken Limb	Secondary/Service - overhead	1	494
7661330	42-13L2	11/02/2011 12:26	Fair	Tree Fell	Secondary/Service - overhead	1	475
7661107	42-14L3	11/02/2011 12:56	Fair	Tree - Broken Limb	Secondary/Service - overhead	1	237
7661048	42-9L3	11/02/2011 13:29	Fair	Tree - Broken Limb	Secondary/Service - overhead	1	155
7661301	42-13L2	11/02/2011 14:33	Fair	Deterioration	Secondary/Service - overhead	1	318

Event ID	Feeder(s)	Time Off	Weather	Cause	Classification	CI	Duration
7661089	42-14L1	11/02/2011 14:36	Fair	Tree - Broken Limb	Secondary/Service - overhead	1	123
7661370	42-14L2	11/02/2011 15:17	Fair	Tree - Broken Limb	Secondary/Service - overhead	1	348
7661274	42-14L3	11/02/2011 15:34	Fair	Tree - Broken Limb	Secondary/Service - overhead	1	223
7661264	42-14L1	11/02/2011 15:35	Fair	Tree - Broken Limb	Secondary/Service - overhead	1	217
7661113	42-14L2	11/02/2011 16:17	Fair	Tree - Broken Limb	Secondary/Service - overhead	1	40
7661357	42-14L2	11/02/2011 16:22	Fair	Tree - Broken Limb	Secondary/Service - overhead	1	270
7661706	42-13L2	11/02/2011 17:57	Fair	Tree - Broken Limb	Secondary/Service - overhead	1	750
7661358	42-14L1	11/02/2011 18:03	Fair	Tree - Broken Limb	Secondary/Service - overhead	1	171
7661685	42-13L3	11/02/2011 18:09	Fair	Tree - Broken Limb	Secondary/Service - overhead	1	658
7661687	42-14L1	11/02/2011 19:53	Fair	Tree - Broken Limb	Secondary/Service - overhead	1	568
7661518	42-14L1	11/02/2011 20:23	Fair	Tree - Broken Limb	Secondary/Service - overhead	7	911

Granite State Electric Company
d/b/a National Grid

October 29, 2011 Storm
Total O&M Restoration Costs
Incurred Through December 31, 2011

Line No.	Description	Total Restoration Costs
1	Payroll charges excluding payroll overheads for GSE employees	\$ 204,079
2	Charges for transportation on GSE vehicles	13,041
3	Charges from outside companies	739,347
4	Charges for materials and supplies	17,070
5	Charges for employee expenses	<u>596</u>
6	Total	<u><u>\$ 974,133</u></u>

Granite State Electric Company
d/b/a National Grid
O&M Restoration Costs associated with Storm of October 29, 2011

Line No.	Outside Companies	Oct-2011 (a)	Nov-2011 (b)	Dec-2011 (c)	Amount (d)
1	Asplundh Tree Expert Co	\$ -	\$ -	\$ 214,993	\$ 214,993
2	K W Reese Inc			41,701	41,701
3	Lewis Tree Service Inc			26,581	26,581
4	Massachusetts Electric Company		20,426		20,426
5	Niagara Mohawk Power Corp		11,182		11,182
6	National Grid USA Service Co.	56,207	241,760		297,967
7	KeySpan Corporate Services, LLC		66,341		66,341
8	Vendors < \$10,000		8,297	51,858	60,155
9	Subtotal Outside Companies	\$ 56,207	\$ 348,006	\$ 335,133	\$ 739,347
10	Company Payroll	-	204,079	-	204,079
11	Transportation	-	13,041	-	13,041
12	Materials & Supplies	8,993	8,263	(185)	17,070
13	Employee Expenses	-	538	58	596
14	Total O&M Restoration Costs	\$ 65,200	\$ 573,927	\$ 335,006	\$ 974,133
15	Less Fairpoint Communications Billing	-	-	-	-
16	Amount Charged to Storm Fund	<u>\$ 65,200</u>	<u>\$ 573,927</u>	<u>\$ 335,006</u>	<u>\$ 974,133</u>